

 KLH®

PROJECT

# BRONX CHILDREN'S MUSEUM

LOCATION

Bronx,  
USA

## ROOM FOR IMAGINATION WITH CURVED KLH® – CLT

.....

The children's museum in the Bronx blends nature and urban culture in a historic 1925 power plant by the Harlem River. Its organic design, inspired by Jean Piaget's ideas on children's spatial perception, offers a unique space for imagination. The museum, the first of its kind in the Bronx, features interactive exhibits focusing on art, music, role-playing, and scientific exploration. Built with LEED Gold certification in mind, it extensively uses natural and recycled materials, including innovative curved KLH® – CLT. Large interlocking panels for walls

and railings were precisely formed and CNC-milled to enable quick on-site assembly. Diverse-height curved benches, inviting all age groups to rest, were factory-coated. The museum stands as a beacon of sustainability and innovation.

### PROJECT INFO

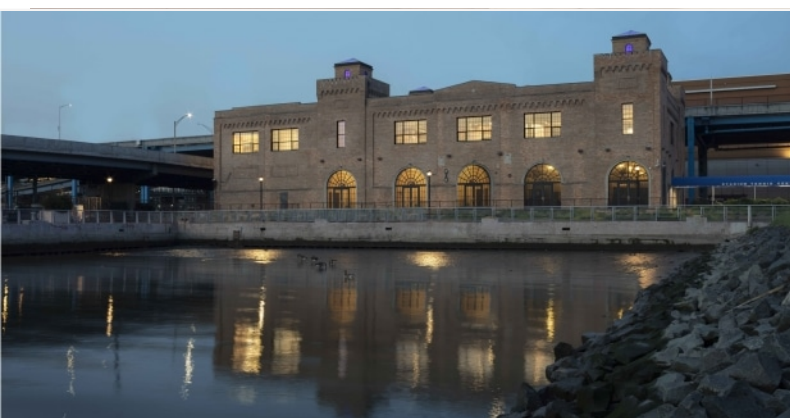
Volume of KLH® – CLT: 2575 m<sup>2</sup> / 402 m<sup>3</sup>

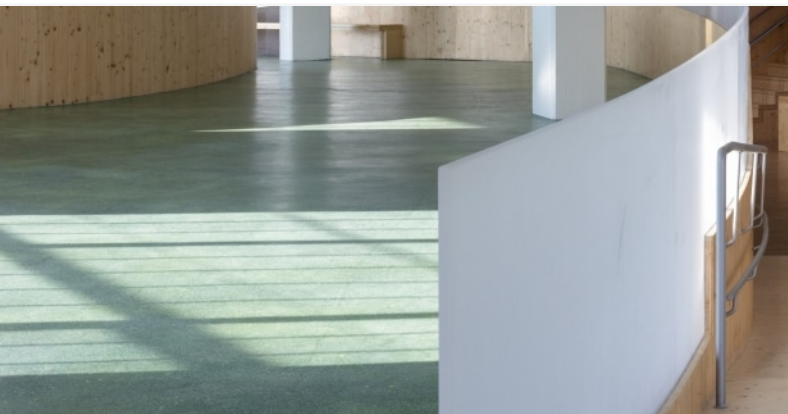
Stored Carbon: 306 Tonnen

Regrowth time in Austria : 7 minutes

PUBLIC BUILDINGS







.....  
**ARCHITECT**

O'Neill Mc Voy Architects  
[www.oneillmcvoy.com](http://www.oneillmcvoy.com)

.....  
**GENERAL CONTRACTOR**

A Quest Corporation

.....  
**CLIENT**

New York City Department of Design  
and Construction

.....  
**PHOTOGRAPHY CREDITS**

© Paul Warchol

.....  
**STRUCTURAL ENGINEER**

Silman A TYlin Company  
[www.silman.com](http://www.silman.com)