

CREMORNE

LOCATION
Sydney,
Australia

THREE-STOREY EXTENSION MODERN EXPANSION TO A 100-YEAR-OLD COTTAGE

.....

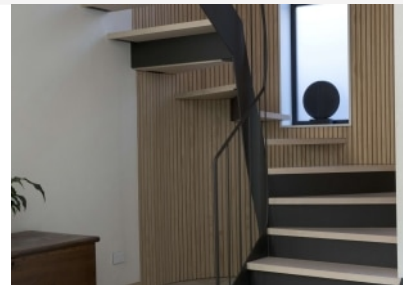
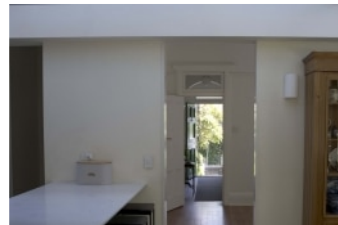
In Cremorne, the architect Axel Richter designed a modern three-storey extension to an over 100-year-old Victorian house, skilfully combining new and old. Using KLH® - CLT, we were able to bring the vision to life, creating a 54m² structure on the 49m² footprint of the previous extensions and realise a modern structure that retains the warmth and charm of the historic building. Seen from the street, the new building blends seamlessly into the streetscape, but when you enter the original house, your gaze is drawn through the house into the light-flooded, spacious living-dining area. Large windows and open-plan layouts create an airy atmosphere and

seamlessly connect the interior with the exterior. Axel Richter's three-storey extension is a successful example of how modern design and traditional architecture can merge to create a unique and appealing home that is both aesthetically pleasing and functional.

PROJECT INFO

Volume of KLH® - CLT: 397 m² / 43 m³
Stored Carbon: 34 tonnes
Regrowth time in Austria: 1 minute

REFURBISHMENT & EXTENSIONS



ARCHITECT

Axel Richter

BUILDER

Tim Ward
Raico Pacific

ELEMENT PLANNING

KLH Pacific Pty Ltd

PHOTO CREDITS

Matt Bright