

TWENTE – FAMILY HOMES

LOCATION
Markelo,
Netherlands

SUSTAINABLE AND SOLID PREFABRICATED HOUSES

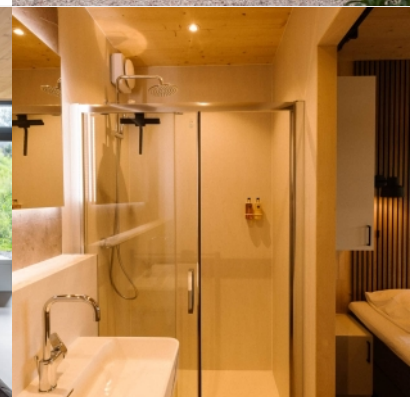
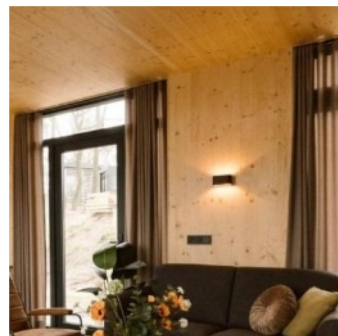
.....

The load-bearing structures of our low-energy houses are made entirely of KLH® – CLT, guaranteeing high strength and resistance to loads. In early 2023, the Holiday Park “Zicht op Twente” in Markelo, Twente, Netherlands, introduced 28 brand new holiday homes to its guests. These spacious four-person houses, spanning 63 square meters each, boast two generously-sized bedrooms, each with its own private bathroom.

For added comfort, these homes come equipped with a heat pump and underfloor heating. The architectural design of these holiday homes is remarkable, featuring glass facades that provide guests with awe-inspiring views of the rolling landscape, creating a sense of being immersed in nature.

Guests can also step out through swing doors onto a spacious terrace complete with a private jacuzzi, making it the perfect place to unwind and enjoy the scenery. The exterior design of these homes combines wooden slats and flashing, resulting in a luxurious appearance that harmonizes seamlessly with the natural surroundings. To enhance the eco-friendly aspect of the homes, a sedum roof has been incorporated.

What's particularly noteworthy is the efficiency of the construction process, as the timber KLH® – CLT frame was completed in just two days by a team of three workers.







ARCHITECT

TVA – Theo Verburg Architecten
www.tva-architecten.nl

STRUCTURAL DESIGN

ibt – ingenieurs in bouwtechniek
www.bouwtechniek.nl

CLIENT

Landgoed Kattenbergse Hoeve
www.kattenbergsehoeve.nl

TIMBER CONSTRUCTION

TVA – Theo Verburg Architecten
www.tva-architecten.nl

BUILDER

Solidhome Group
www.solidhomegroup.nl

PHOTOGRAPHY

Solidhome Group
www.solidhomegroup.nl