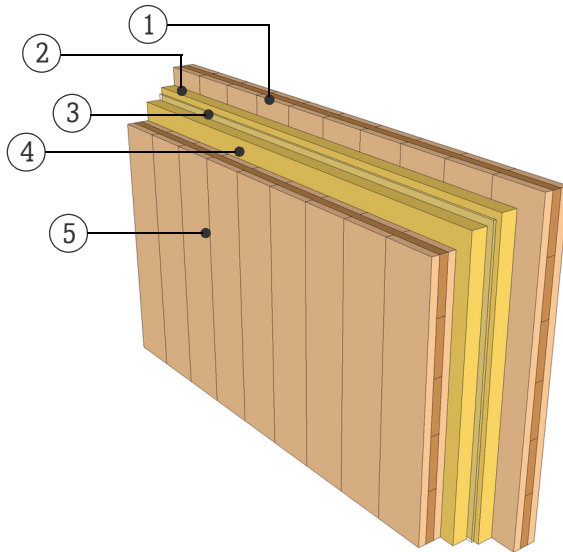


DATASHEET

PARTITION WALL

WTW03.01

TWO SEPARATE LAYER



FIRE RESISTANCE

(R)EI 60 [min]

With the application of 15 mm gypsum fiberboard on both sides, the fire resistance (R-criteria/structural resistance) up to 60 minutes applies for an effective wall height of 2.95 m with fire exposure from two sides. Should the planking material or the thickness deviate from stated information and a detailed examination of the actual load be required, please consult with a competent structural engineer of the KLH technical team.

SOUND INSULATION

R<sub>w</sub> (C;C<sub>tr</sub>) 64 (-3;-9) [dB]

THERMAL CHARACTERISTICS

U 0,21 [W/m²K]

m<sub>w,B,A</sub> 38/38 [kg/m²]

MATERIAL

PROPERTIES

	[mm]		λ [W/mK]	μ min-max [-]	ρ [kg/m³]	c [kJ/kgK]	
①	80.0	3s TT, KLH solid timber slab	0.12	50 - 300	500	1.6	D
②	60.0	Mineral wool, low density	0.04	1	15-30	1	A1
③	10.0	Air gap					
④	60.0	Mineral wool, low density	0.04	1	15-30	1	A1
⑤	80.0	3s TT, KLH solid timber slab	0.12	50 - 300	500	1.6	D

Thickness 290,0 [mm]

Mass per square meter ca. 95 [kg/m²]

Prüfbericht Schall: TU-Graz B03.851.010.320  
Calculation of the physical values by the  
KLH Massivholz GmbH, without warranty