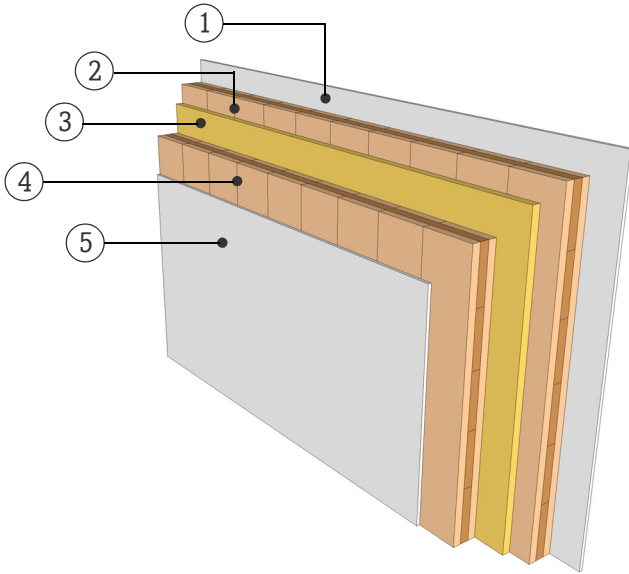


DATASHEET

PARTITION WALL

WTW04.01

TWO SEPARATE LAYER



FIRE RESISTANCE

(R)EI 60 [min]

With the application of 15 mm gypsum fiberboard on both sides, the fire resistance (R-criteria/structural resistance) up to 60 minutes applies for an effective wall height of 2.95 m with fire exposure from two sides. Should the planking material or the thickness deviate from stated information and a detailed examination of the actual load be required, please consult with a competent structural engineer of the KLH technical team.

SOUND INSULATION

R_w (C;C_{tr}) 57 (-3;-11) [dB]

THERMAL CHARACTERISTICS

U 0,39 [W/m²K]

m_{w,B,A} 39/39 [kg/m²]

MATERIAL

PROPERTIES

	[mm]		λ [W/mK]	μ min-max [-]	ρ [kg/m³]	c [kJ/kgK]	
①	12.5	Gypsum plasterboard	0.25	10	680	0.96	A2
②	90.0	3s TT, KLH solid timber slab	0.12	50 - 300	500	1.6	D
③	30.0	Impact sound insulation, mineral wool	0.036	1	70 - 150	0.84	A1
④	90.0	3s TT, KLH solid timber slab	0.12	50 - 300	500	1.6	D
⑤	12.5	Gypsum plasterboard	0.25	10	680	0.96	A2

Thickness 235,0 [mm]

Mass per square meter ca. 105 [kg/m²]

Test report sound: TU-Graz B04.851.003.310
Calculation of the physical values by the
KLH Massivholz GmbH, without warranty