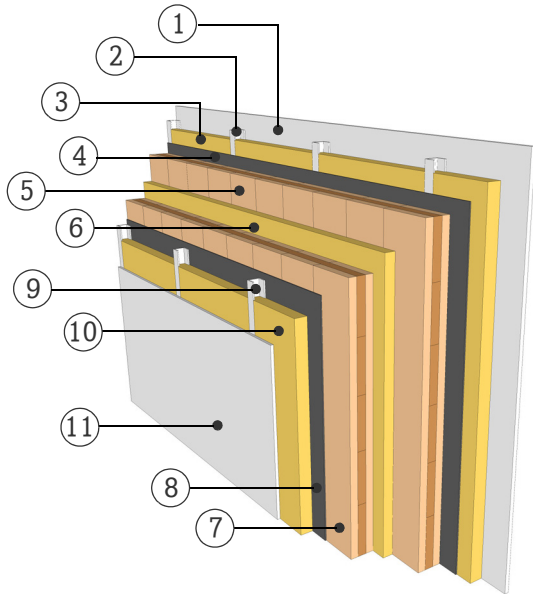


DATASHEET

PARTITION WALL

WTW06.01

TWO SEPARATE LAYER



FIRE RESISTANCE

(R)EI 60 [min]

With the application of 15 mm gypsum fiberboard on both sides, the fire resistance (R-criteria/structural resistance) up to 60 minutes applies for an effective wall height of 2.95 m with fire exposure from two sides. Should the planking material or the thickness deviate from stated information and a detailed examination of the actual load be required, please consult with a competent structural engineer of the KLH technical team.

SOUND INSULATION

$D_{nT,w}$ (C;C_T) 69 (-9;-17) [dB]

THERMAL CHARACTERISTICS

U 0,20 [W/m²K]

$m_{w,B,A}$ 15/15 [kg/m²]

MATERIAL

PROPERTIES

[mm]		λ [W/mK]	μ min-max [-]	ρ [kg/m³]	c [J/kgK]	
①	12.5 Gypsum fiberboard	0.21	8	900	1.05	A2
②	50.0 Light weight C-profiles on swinging hoops					A1
③	50.0 Mineral wool, low density	0.038	1	40	0.9	A1
④	Wind barrier					
⑤	80.0 3s TT, KLH solid timber slab	0.12	50 - 300	500	1.6	D
⑥	40.0 Mineral wool, low density	0.04	1	15-30	1	A1
⑦	80.0 3s TT, KLH solid timber slab	0.12	50 - 300	500	1.6	D
⑧	Wind barrier					
⑨	50.0 Light weight C-profiles on swinging hoops					A1
⑩	50.0 Mineral wool, low density	0.038	1	40	0.9	A1
⑪	12.5 Gypsum fiberboard	0.21	8	900	1.05	A2

Thickness 325,0 [mm]

Mass per squaremeter ca. 115 [kg/m²]

Test report sound: In-situ measurement Mühlweg TGM-VA AB 11212
Calculation of the physical values by the
KLH Massivholz GmbH, without warranty