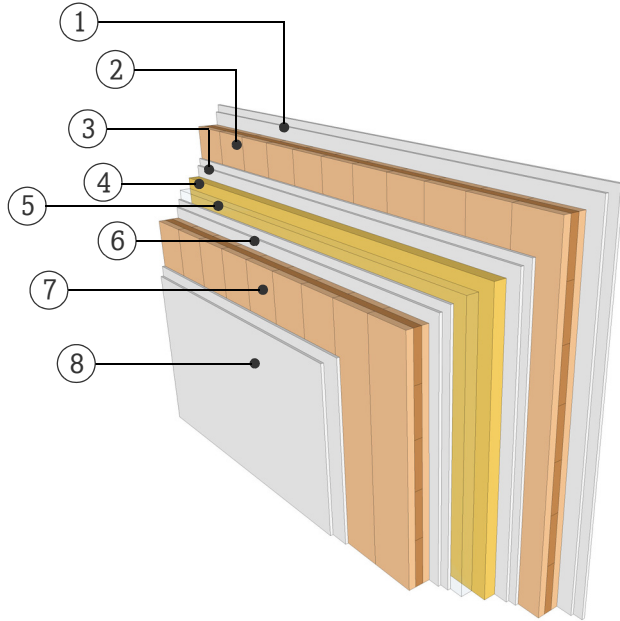


DATASHEET

PARTITION WALL

WTW12.04

TWO SEPARATE LAYER



FIRE RESISTANCE

(R)EI 90 [min]

With the application of 15 mm gypsum fiberboard on both sides, the fire resistance (R-criteria/structural resistance) up to 90 minutes applies for an effective wall height of 2.95 m with fire exposure from two sides. Should the planking material or the thickness deviate from stated information and a detailed examination of the actual load be required, please consult with a competent structural engineer of the KLH technical team.

SOUND INSULATION

R_w (C;C_{tr}) 68 (-3;-7) [dB]

THERMAL CHARACTERISTICS

U 0,25 [W/m²K]

m_{w,B,A} 40/40 [kg/m²]

MATERIAL

PROPERTIES

	[mm]		λ [W/mK]	μ min-max [-]	ρ [kg/m³]	c [kJ/kgK]	
①	25.0	Gypsum plasterboard	0.25	10	680	0.96	A2
②	95.0	3s TT, KLH solid timber slab	0.12	50 - 300	500	1.6	D
③	25.0	Gypsum plasterboard	0.25	10	680	0.96	A2
④	50.0	Mineral wool, low density	0.04	1	15-30	1	A1
⑤	50.0	Air gap					
⑥	25.0	Gypsum plasterboard	0.25	10	680	0.96	A2
⑦	95.0	3s TT, KLH solid timber slab	0.12	50 - 300	500	1.6	D
⑧	25.0	Gypsum plasterboard	0.25	10	680	0.96	A2

Thickness 390,0 [mm]

Mass per square meter ca. 165 [kg/m²]

Test report sound: HFA 1252/2012-BB
Calculation of the physical values by the
KLH Massivholz GmbH, without warranty