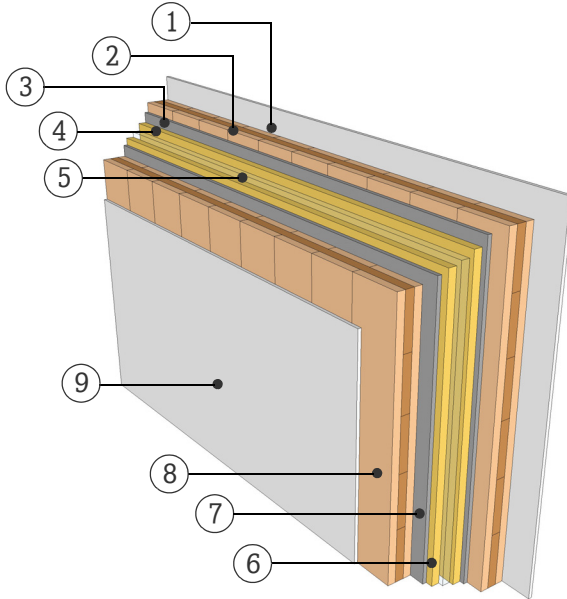


DATASHEET

PARTITION WALL

WTW16.03

TWO SEPARATE LAYER



FIRE RESISTANCE

(R)EI 60 [min]

With the application of 15 mm gypsum fiberboard on both sides, the fire resistance (R-criteria/structural resistance) up to 60 minutes applies for an effective wall height of 2.95 m with fire exposure from two sides. Should the planking material or the thickness deviate from stated information and a detailed examination of the actual load be required, please consult with a competent structural engineer of the KLH technical team.

SOUND INSULATION

R_w (C;C_{tr}) 65 (-2;-8) [dB]

THERMAL CHARACTERISTICS

U 0,28 [W/m²K]

m_{w,B,A} 38/38 [kg/m²]

MATERIAL

PROPERTIES

	[mm]		λ [W/mK]	μ min-max [-]	ρ [kg/m³]	c [kJ/kgK]	
①	12.5	Gypsum plasterboard	0.25	10	680	0.96	A2
②	95.0	3s TT, KLH solid timber slab	0.12	50 - 300	500	1.6	D
③	15.0	Cement bonded sandwich panel, Fermacell	0.4	40	1000	1	A1
④	30.0	Glasfiber with felt layer	0.032	1	40	0.81	A2
⑤	10.0	Air gap					
⑥	30.0	Glasfiber with felt layer	0.032	1	40	0.81	A2
⑦	15.0	Cement bonded sandwich panel, Fermacell	0.4	40	1000	1	A1
⑧	95.0	3s TT, KLH solid timber slab	0.12	50 - 300	500	1.6	D
⑨	12.5	Gypsum plasterboard	0.25	10	680	0.96	A2

Thickness 315,0 [mm]

Mass per square meter ca. 145 [kg/m²]

Test report sound: HFA 781a2016-BB
Calculation of the physical values by the
KLH Massivholz GmbH, without warranty