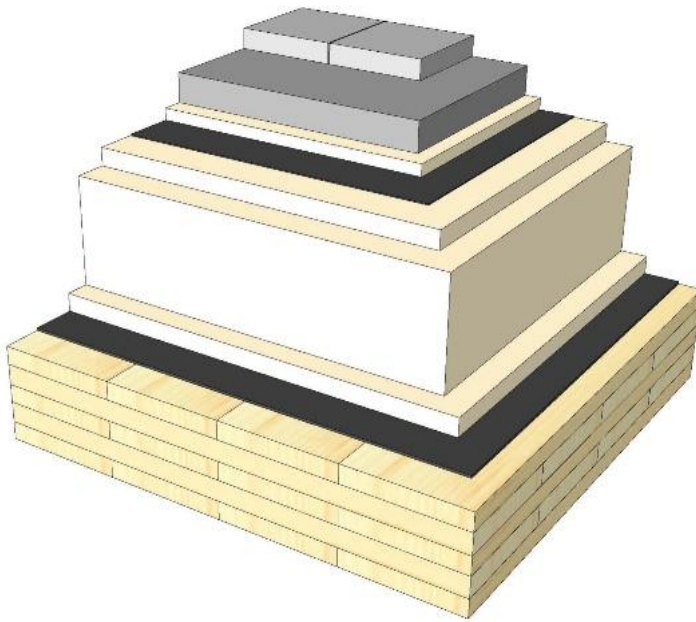
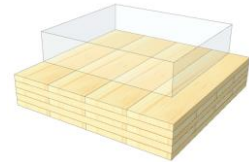


DA 06

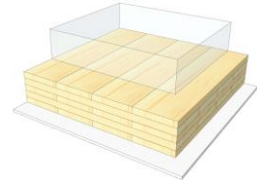
Flat roof / concrete blocks



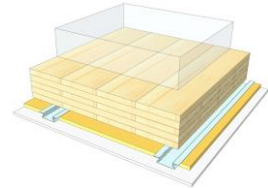
KLH® Visible



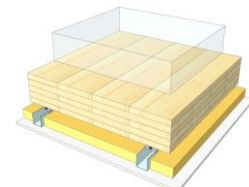
+ G



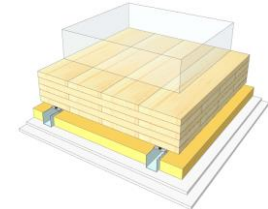
+ RP



+ SC



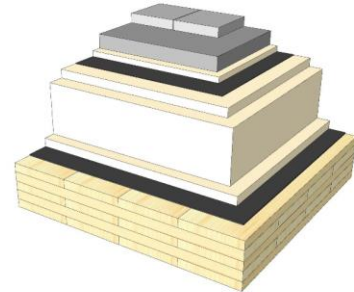
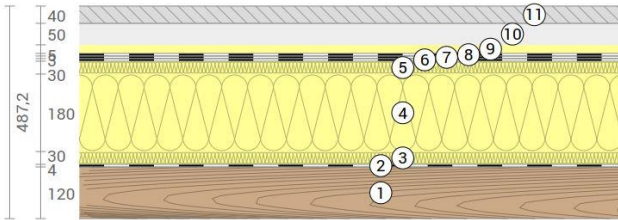
+ SC / 2*G



	KLH® Visible	+ G	+ RP	+ SC	+ SC / 2*G
Airborne Rw [dB]	55	56	58	60	70
Impact Ln,w [dB]	49	49	45	42	33
Thermal U [W/m²K]	0,12	0,12	0,11	0,10	0,10
Fire R*EI [min]	60	60	60	60	90
Thickness [mm]	487	500	527	560	572
Ecology [kg CO2 eq./m²]	-49	-47	-43	-41	-38

DA 06 V

Roof terrace / EPS / paving slabs



No	mm	Material
1	120	KLH® - CLT
2	4	Vapour barrier
3	30	Impact sound insulation; EPS
4	180	Roof panel, EPS
5	30	Impact sound insulation; EPS
6	3	Roof sealing sheet, 1st layer
7	5	Roof sealing sheet, 2nd layer
8	5	Separating layer
9	20	Separation layer, XPS
10	50	Gravel fill
11	40	Concrete elements

R*EI (fire attack from below)
60 minutes

U-Value
0,12 W/(m²K)

Rw
55 (-2;-6) dB

Lnw
49 (-2) dB

Thickness
487 mm
Mass per squaremeter
279 kg/m²

Global warming potential
-49 kg CO ₂ eq./m²
Primary energy (n. renewable)
358 kWh/m²

Link Ubakus
[DA 06 V Ubakus](#)

Link pre-dimensioning fire
[KLH REI 60](#)

Fire resistance
R*EI
60

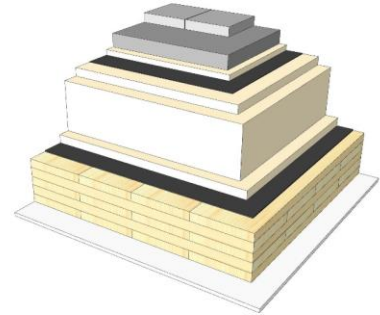
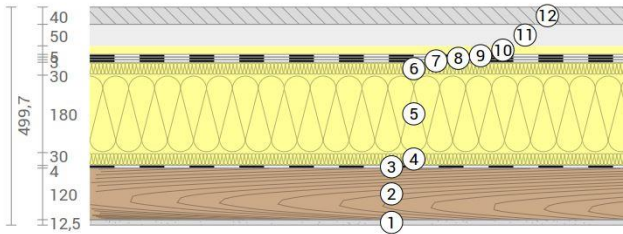
Thermal protection
W/(m²K)
0,12

Sound insulation
dB
55

Ecology
kg CO₂eq./m²
-49

DA 06 G

Roof terrace / EPS / paving slabs
Cladded



No	mm	Material
1	12,5	Gt-F board
2	120	KLH® - CLT
3	4	Vapour barrier
4	30	Impact sound insulation; EPS
5	180	Roof panel, EPS
6	30	Impact sound insulation; EPS
7	3	Roof sealing sheet, 1st layer
8	5	Roof sealing sheet, 2nd layer
9	5	Separating layer
10	20	Separation layer, XPS
11	50	Gravel fill
12	40	Concrete elements

R*EI (fire attack from below)
60 minutes

U-Value
0,12 W/(m²K)

Rw
56 (-2;-6) dB

Lnw
49 (-2) dB

Thickness
500 mm
Mass per squaremeter
289 kg/m²

Global warming potential
-47 kg CO ₂ eq./m²
Primary energy (n. renewable)
369 kWh/m²

Link Ubakus
[DA 06 G Ubakus](#)

Link pre-dimensioning fire
[KLH REI 60](#)

Fire resistance
R*EI
60

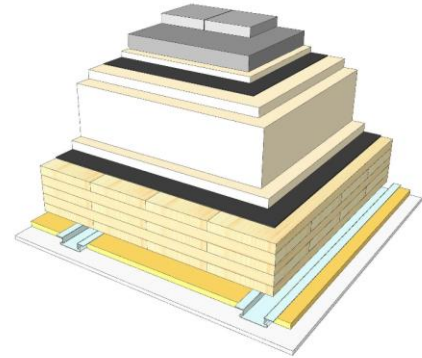
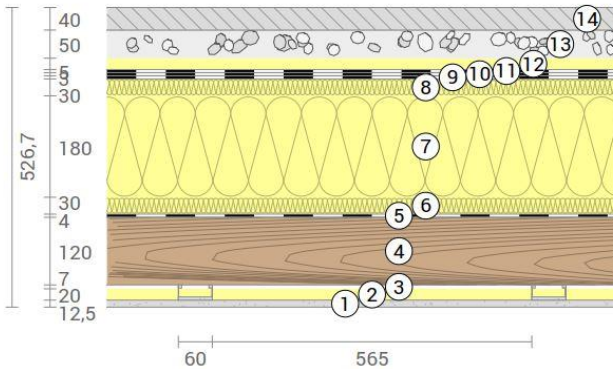
Thermal protection
W/(m²K)
0,12

Sound insulation
dB
56

Ecology
kg CO₂eq./m²
-47

DA 06 RP

Roof terrace / EPS / paving slabs
SC on resilient profiles



No	mm	Material
1	12,5	Gt-F board
2	20	Mineral wool
3	27	Resilient profile
4	120	KLH® - CLT
5	4	Vapour barrier
6	30	Impact sound insulation; EPS
7	180	Roof panel, EPS
8	30	Impact sound insulation; EPS
9	3	Roof sealing sheet, 1st layer
10	5	Roof sealing sheet, 2nd layer
11	5	Separating layer
12	20	Separation layer, XPS
13	50	Gravel fill
14	40	Concrete elements

Thickness	527 mm
Mass per squaremeter	290 kg/m ²

Link Ubakus
[DA 06 RP Ubakus](#)

R*EI (fire attack from below)	60 minutes
--------------------------------------	-------------------

U-Value	0,11 W/(m ² K)
----------------	----------------------------------

Rw	58 (-2;-6) dB
-----------	----------------------

Lnw	45 (-1) dB
------------	-------------------

Global warming potential	-43 kg CO ₂ eq./m ²
---------------------------------	--

Primary energy (n. renewable)	380 kWh/m ²
--------------------------------------	-------------------------------

Link pre-dimensioning fire
[KLH REI 60](#)

Fire resistance
R*EI
60

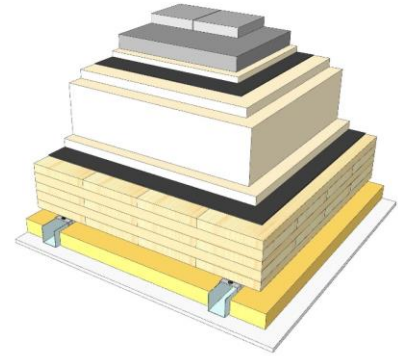
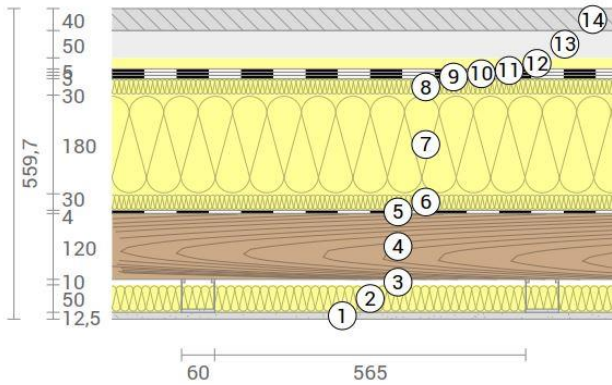
Thermal protection
W/(m²K)
0,11

Sound insulation
dB
58

Ecology
kg CO₂eq./m²
-43

DA 06 SC

Roof terrace / EPS / paving slabs
SC on CD-profiles



No	mm	Material
1	12,5	Gt-F board
2	50	Rock wool
3	60	CD-profiles
4	120	KLH® - CLT
5	4	Vapour barrier
6	30	Impact sound insulation; EPS
7	180	Roof panel, EPS
8	30	Impact sound insulation; EPS
9	3	Roof sealing sheet, 1st layer
10	5	Roof sealing sheet, 2nd layer
11	5	Separating layer
12	20	Separation layer, XPS
13	50	Gravel fill
14	40	Concrete elements

Thickness	560 mm
Mass per squaremeter	291 kg/m ²

Link Ubakus
[DA 06 SC Ubakus](#)

R*EI (fire attack from below)	60 minutes
--------------------------------------	-------------------

U-Value	0,1 W/(m ² K)
----------------	---------------------------------

Rw	60 (-2;-6) dB
-----------	----------------------

Lnw	42 (1) dB
------------	------------------

Global warming potential	-41 kg CO ₂ eq./m ²
---------------------------------	--

Primary energy (n. renewable)	388 kWh/m ²
--------------------------------------	-------------------------------

Link pre-dimensioning fire
[KLH REI 60](#)

Fire resistance
R*EI
60

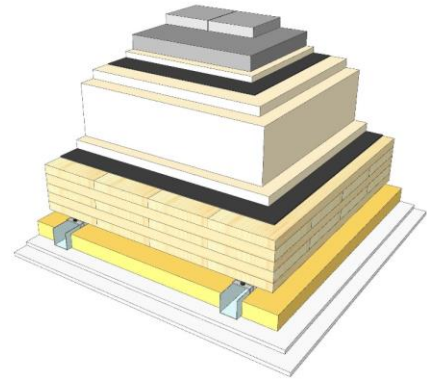
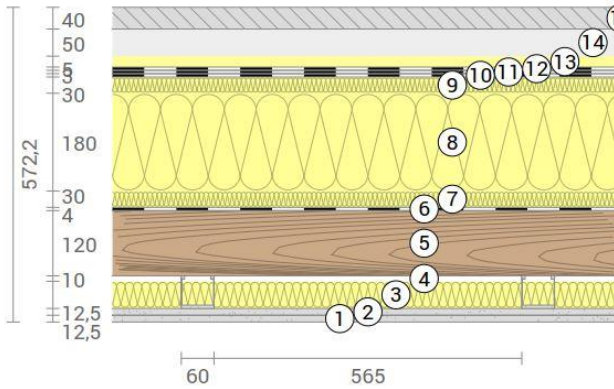
Thermal protection
W/(m²K)
0,1

Sound insulation
dB
60

Ecology
kg CO₂eq./m²
-41

DA 06 SC2

Roof terrace / EPS / paving slabs
 SC on CD-profiles, resilient clips



No	mm	Material
1	12,5	Gt-F board
2	12,5	Gt-F board
3	50	Rock wool
4	60	CD-profiles on resilient clips
5	120	KLH® - CLT
6	4	Vapour barrier
7	30	Impact sound insulation; EPS
8	180	Roof panel, EPS
9	30	Impact sound insulation; EPS
10	3	Roof sealing sheet, 1st layer
11	5	Roof sealing sheet, 2nd layer
12	5	Separating layer
13	20	Separation layer, XPS
14	50	Gravel fill
15	40	Concrete elements
Thickness		
	572	mm
Mass per squaremeter		
	301	kg/m ²

R*EI (fire attack from below)
90 minutes

U-Value
0,1 W/(m ² K)

Rw
70 (-1;-6) dB

Lnw
39 (1) dB

Global warming potential
-38 kg CO ₂ eq./m ²

Primary energy (n. renewable)
399 kWh/m ²

Link Ubakus
[DA 06 SC2 Ubakus](#)

Link pre-dimensioning fire
[KLH REI 90](#)

Fire resistance
 R*EI
90

Thermal protection
 W/(m²K)
0,1

Sound insulation
 dB
70

Ecology
 kg CO₂eq./m²
-38