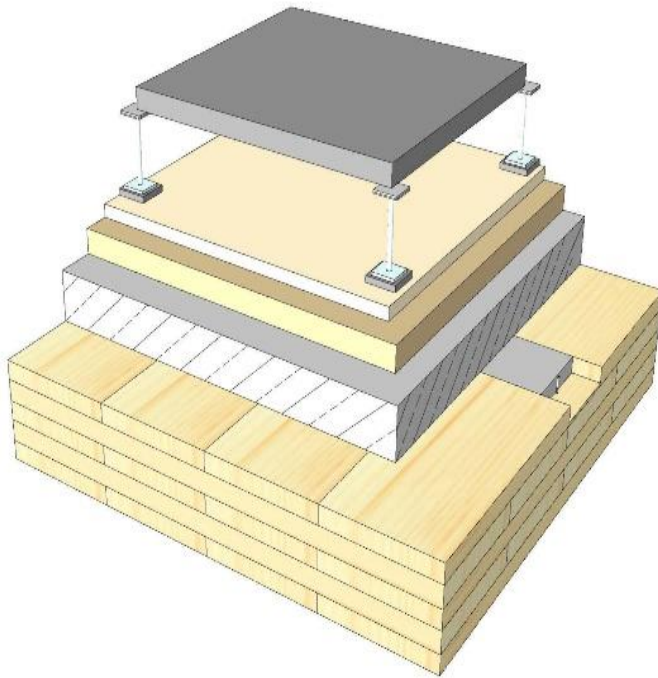


GD 08

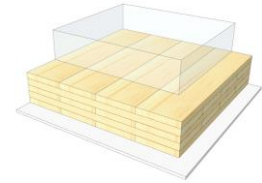
Double floor / TCC



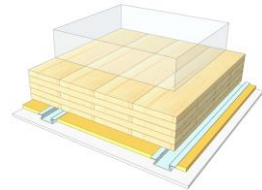
KLH® Visible



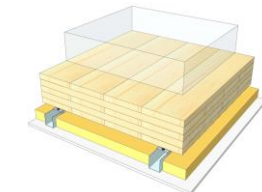
+ G



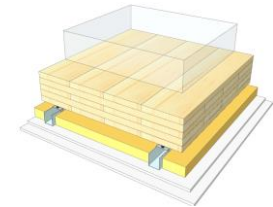
+ FS



+ SC



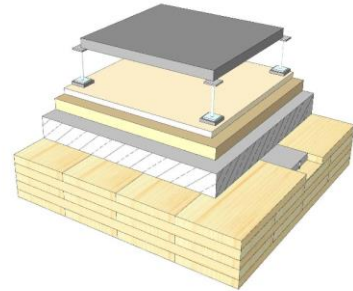
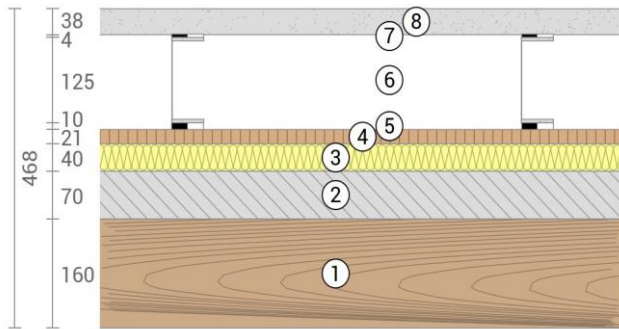
+ SC / 2*G



	KLH® Visible	+ G	+ RP	+ SC	+ SC / 2*G
Airborne Rw [dB]	61	61	63	64	78
Impact Ln,w [dB]	47	47	42	39	37
Thermal U [W/m²K]	0,32	0,31	0,27	0,24	0,24
Fire R*EI [min]	90	120	120	120	120
Thickness [mm]	468	481	508	541	553
Ecology [kg CO2 eq./m²]	-91	-90	-85	-82	-80

GD 08 V

Compartment floor / raised floor system on TCC



No	mm	Material
1	160	KLH® - CLT
2	70	Concrete top layer
3	40	Wood fiberboard
4	21	OSB panel
5	10	Impact noise bearing, PU
6	125	Leg supports
7	4	Bearing plates
8	38	Floor elements, mineralic

R*EI (fire attack from below)
90 minutes

U-Value
0,32 W/(m²K)

Rw
61 (-2;-8) dB

Lnw
47 (0) dB

Thickness
468 mm

Mass per squaremeter
311 kg/m²

Global warming potential
-91 kg CO ₂ eq./m²

Primary energy (n. renewable)
241 kWh/m²

Link Ubakus
[GD 08 V Ubakus](#)

Link pre-dimensioning fire
[KLH REI 90](#)

Fire resistance
R*EI
90

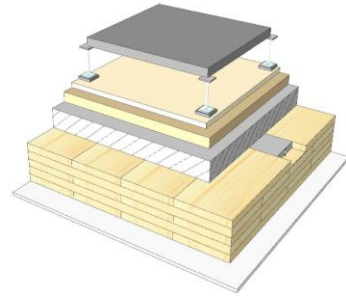
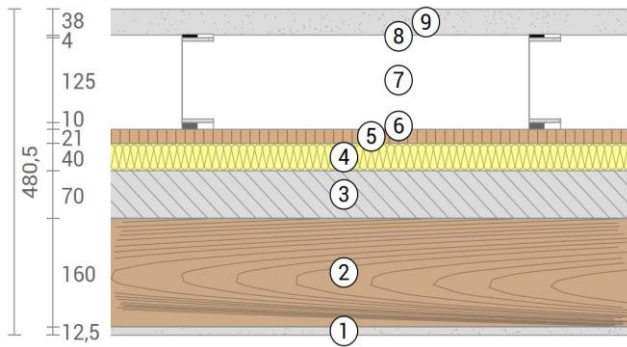
Thermal protection
W/(m²K)
0,32

Sound insulation
dB
61

Ecology
kg CO₂eq./m²
-91

GD 08 G

Compartment floor / raised floor system on TCC cladded



No	mm	Material
1	12,5	Gt-F board
2	160	KLH® - CLT
3	70	Concrete top layer
4	40	Wood fiberboard
5	21	OSB panel
6	10	Impact noise bearing, PU
7	125	Leg supports
8	4	Bearing plates
9	38	Floor elements, mineralic

R*EI (fire attack from below)
120 minutes

U-Value
0,31 W/(m²K)

Rw
61 (-2;-8) dB

Lnw
47 (0) dB

Thickness
481 mm

Mass per squaremeter
320 kg/m²

Global warming potential
-90 kg CO ₂ eq./m²

Primary energy (n. renewable)
246 kWh/m²

Link Ubakus
[GD 08 G Ubakus](#)

Link pre-dimensioning fire
[KLH REI 120](#)

Fire resistance
R*EI
120

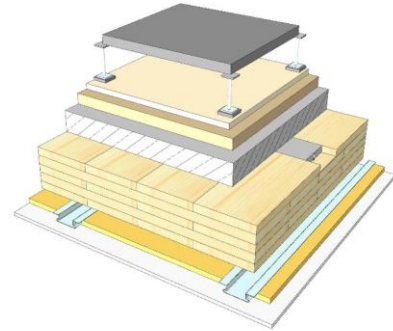
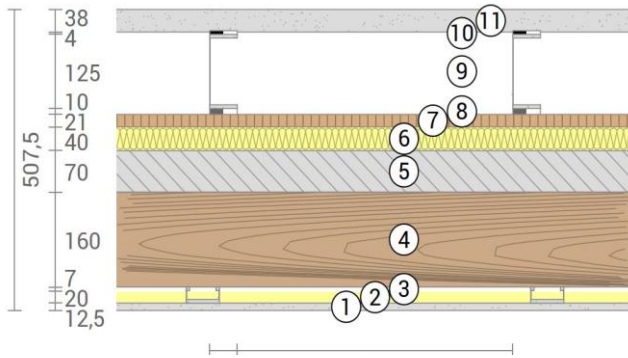
Thermal protection
W/(m²K)
0,31

Sound insulation
dB
61

Ecology
kg CO₂eq./m²
-90

GD 08 RP

Compartment floor / raised floor system on TCC
 SC on resilient profiles



No	mm	Material
1	12,5	Gt-F board
2	20	Mineral wool
3	27	Resilient profile
4	160	KLH® - CLT
5	70	Concrete top layer
6	40	Wood fiberboard
7	21	OSB panel
8	10	Impact noise bearing, PU
9	125	Leg supports
10	4	Bearing plates
11	38	Floor elements, mineralic

R*EI (fire attack from below)	120 minutes
-------------------------------	--------------------

U-Value	0,27 W/(m²K)
---------	---------------------

Rw	63 (-3;-9) dB
----	----------------------

Lnw	42 (2) dB
-----	------------------

Thickness	508 mm
Mass per squaremeter	322 kg/m²

Global warming potential	-85 kg CO ₂ eq./m²
Primary energy (n. renewable)	263 kWh/m²

Link Ubakus
[GD 08 RP Ubakus](#)

Link pre-dimensioning fire
[KLH REI 120](#)

Fire resistance
 R*EI
120

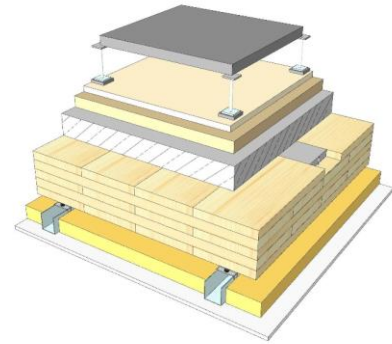
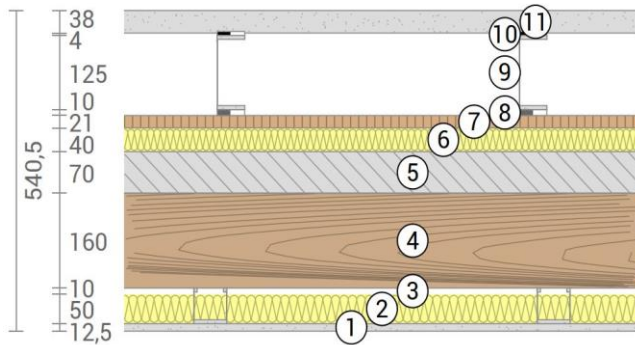
Thermal protection
 W/(m²K)
0,27

Sound insulation
 dB
63

Ecology
 kg CO₂eq./m²
-85

GD 08 SC

Compartment floor / raised floor system on TCC
 SC on CD-profiles



No	mm	Material
1	12,5	Gt-F board
2	50	Mineral wool
3	60	CD-profile
4	160	KLH® - CLT
5	70	Concrete top layer
6	40	Wood fiberboard
7	21	OSB panel
8	10	Impact noise bearing, PU
9	125	Leg supports
10	4	Bearing plates
11	38	Floor elements, mineralic

R*EI (fire attack from below)	120 minutes
-------------------------------	--------------------

U-Value	0,24 W/(m²K)
---------	---------------------

Rw	64 (-1;-7) dB
----	----------------------

Lnw	39 (2) dB
-----	------------------

Thickness	541 mm
-----------	---------------

Mass per squaremeter	323 kg/m²
----------------------	------------------

Global warming potential	-82 kg CO ₂ eq./m²
--------------------------	--------------------------------------

Primary energy (n. renewable)	272 kWh/m²
-------------------------------	-------------------

Link Ubakus
[GD 08 SC Ubakus](#)

Link pre-dimensioning fire
[KLH REI 120](#)

Fire resistance
 R*EI
120

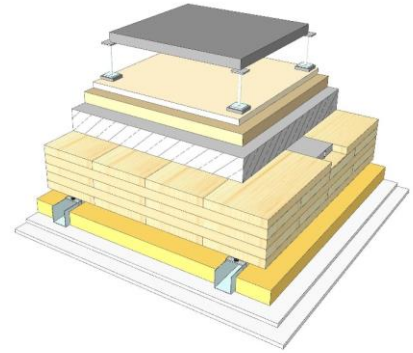
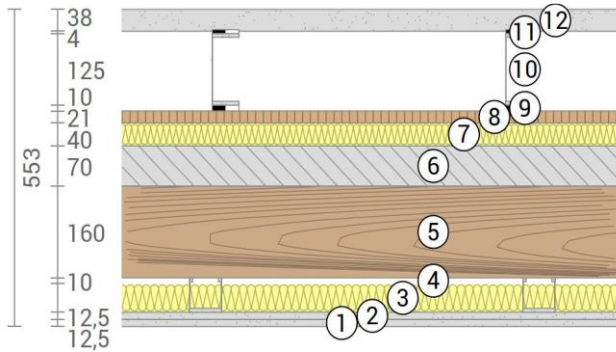
Thermal protection
 W/(m²K)
0,24

Sound insulation
 dB
64

Ecology
 kg CO₂eq./m²
-82

GD 08 SC2

Compartment floor / raised floor system on TCC
 SC on CD-profiles, resilient clips



No	mm	Material
1	12,5	Gt-F board
2	12,5	Gt-F board
3	50	Mineral wool
4	60	CD-profile on resilient clips
5	160	KLH® - CLT
6	70	Concrete top layer
7	40	Wood fiberboard
8	21	OSB panel
9	10	Impact noise bearing, PU
10	125	Leg supports
11	4	Bearing plates
12	38	Floor elements, mineralic

R*EI (fire attack from below)	120 minutes
-------------------------------	--------------------

U-Value	0,24 W/(m²K)
---------	---------------------

Rw	78 (-7;-15) dB
----	-----------------------

Lnw	37 (2) dB
-----	------------------

Thickness	553 mm
-----------	---------------

Mass per squaremeter	333 kg/m²
----------------------	------------------

Global warming potential	-80 kg CO ₂ eq./m²
--------------------------	--------------------------------------

Primary energy (n. renewable)	283 kWh/m²
-------------------------------	-------------------

Link Ubakus
[GD 08 SC2 Ubakus](#)

Link pre-dimensioning fire
[KLH REI 120](#)

Fire resistance
 R*EI
120

Thermal protection
 W/(m²K)
0,24

Sound insulation
 dB
78

Ecology
 kg CO₂eq./m²
-80