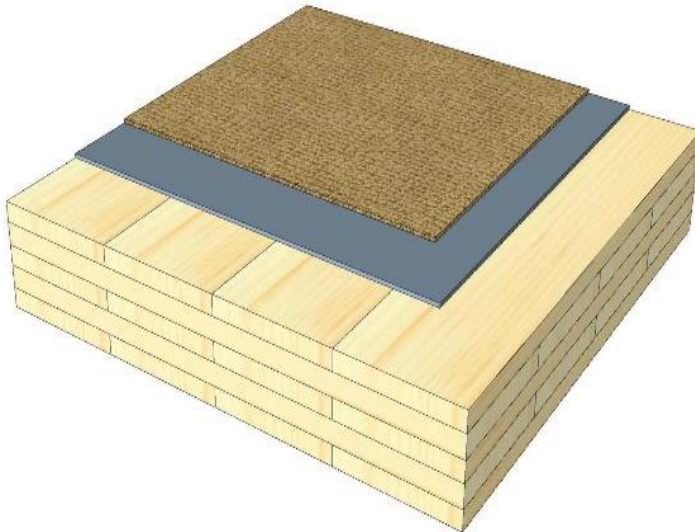
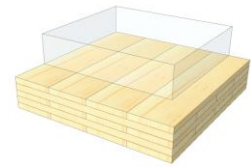


# GD 09

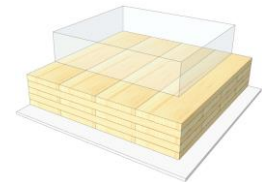
## Carpet floor



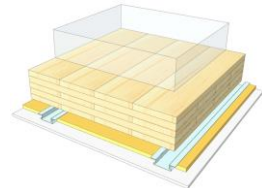
KLH® Visible



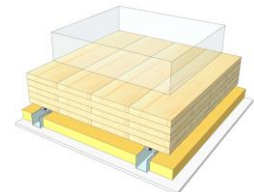
+ G



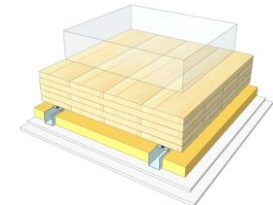
+ FS



+ SC



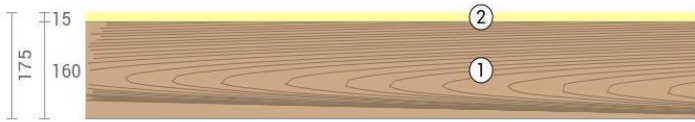
+ SC / 2\*G



	KLH® Visible	+ G	+ RP	+ SC	+ SC / 2*G
<b>Airborne</b> Rw [dB]	35	36	45	55	57
<b>Impact</b> Ln,w [dB]	62	62	58	53	48
<b>Thermal</b> U [W/m²K]	0,56	0,54	0,43	0,35	0,35
<b>Fire</b> R*EI [min]	90	120	120	120	120
<b>Thickness</b> [mm]	175	188	215	250	260
<b>Ecology</b> [kg CO2 eq./m²]	-108	-106	-102	-99	-97

# GD 09 V

Compartment floor / carpet floor



No	mm	Material
1	15	KLH® - CLT
2	160	Carpet floor

R*EI (fire attack from below)
<b>90</b> minutes

U-Value
<b>0,56</b> W/(m²K)

Rw
<b>35</b> (-2;-3) dB
Lnw
<b>62</b> (0) dB

Thickness
<b>175</b> mm
Mass per squaremeter
<b>78</b> kg/m²

Global warming potential
<b>-108</b> kg CO <sub>2</sub> eq./m²
Primary energy (n. renewable)
<b>62</b> kWh/m²

Link Ubakus  
[GD 09 V Ubakus](#)

Link pre-dimensioning fire  
[KLH REI 90](#)

Fire resistance  
R\*EI  
**90**

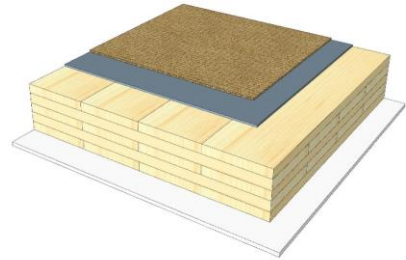
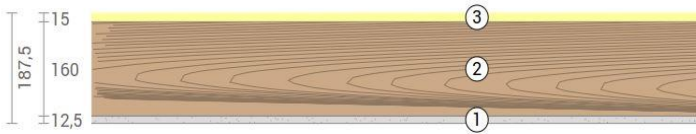
Thermal protection  
W/(m²K)  
**0,56**

Sound insulation  
dB  
**35**

Ecology  
kg CO<sub>2</sub>eq./m²  
**-108**

# GD 09 G

Compartment floor / carpet floor, cladded



No	mm	Material
1	12,5	Gt-F board
2	160	KLH® - CLT
3	15	Carpet floor

R*EI (fire attack from below)	<b>120</b> minutes
-------------------------------	--------------------

U-Value	<b>0,54</b> W/(m²K)
---------	---------------------

Rw	<b>36</b> (-2;-3) dB
Lnw	<b>62</b> (0) dB

Thickness	<b>188</b> mm
Mass per squaremeter	<b>88</b> kg/m²

Global warming potential	<b>-106</b> kg CO <sub>2</sub> eq./m²
Primary energy (n. renewable)	<b>73</b> kWh/m²

Link Ubakus  
[GD 09 G Ubakus](#)

Link pre-dimensioning fire  
[KLH REI 120](#)

Fire resistance  
R\*EI  
**120**

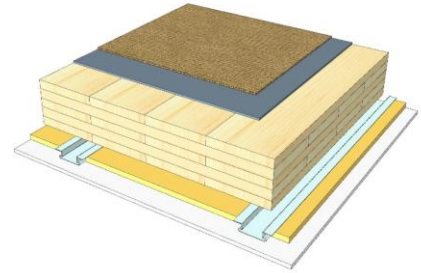
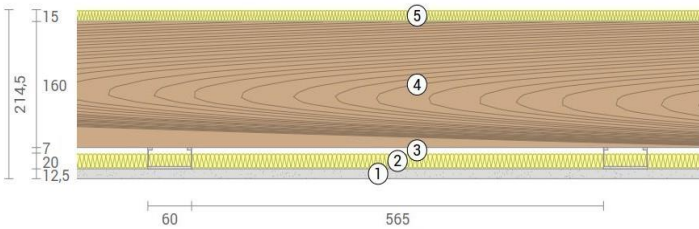
Thermal protection  
W/(m²K)  
**0,54**

Sound insulation  
dB  
**36**

Ecology  
kg CO<sub>2</sub>eq./m²  
**-106**

# GD 09 RP

Compartment floor / carpet floor  
SC on resilient profiles



No	mm	Material
1	12,5	Gt-F board
2	20	Mineral wool
3	27	Resilient profile
4	160	KLH® - CLT
5	15	Carpet floor

R*EI (fire attack from below)
<b>120</b> minutes

U-Value
<b>0,43</b> W/(m²K)

Rw
<b>45</b> (-4;-3) dB

Lnw
<b>58</b> (1) dB

Thickness
<b>215</b> mm

Mass per squaremeter
<b>90</b> kg/m²

Global warming potential
<b>-102</b> kg CO <sub>2</sub> eq./m²

Primary energy (n. renewable)
<b>84</b> kWh/m²

Link Ubakus  
[GD 09 RP Ubakus](#)

Link pre-dimensioning fire  
[KLH REI 120](#)

Fire resistance  
R\*EI  
**120**

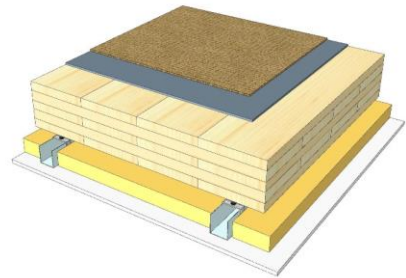
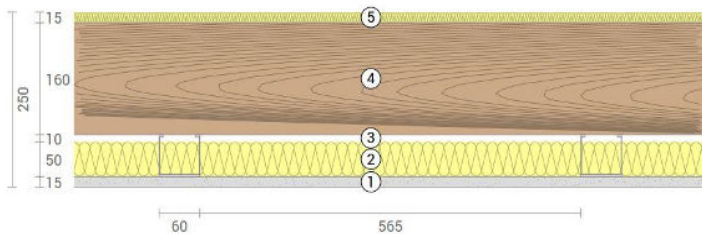
Thermal protection  
W/(m²K)  
**0,43**

Sound insulation  
dB  
**45**

Ecology  
kg CO<sub>2</sub>eq./m²  
**-102**

# GD 09 SC

Compartment floor / carpet floor  
SC on CD-profiles



No	mm	Material
1	12,5	Gt-F board
2	50	Mineral wool
3	60	CD-profile
4	160	KLH® - CLT
5	15	Carpet floor

R*EI (fire attack from below)
<b>120</b> minutes

U-Value
<b>0,35</b> W/(m²K)

Rw
<b>55</b> (-1;-6) dB
Lnw
<b>53</b> (1) dB

Thickness
<b>250</b> mm
Mass per squaremeter
<b>93</b> kg/m²

Global warming potential
<b>-99</b> kg CO <sub>2</sub> eq./m²
Primary energy (n. renewable)
<b>94</b> kWh/m²

Link Ubakus  
[GD 09 SC Ubakus](#)

Link pre-dimensioning fire  
[KLH REI 120](#)

Fire resistance  
R\*EI  
**120**

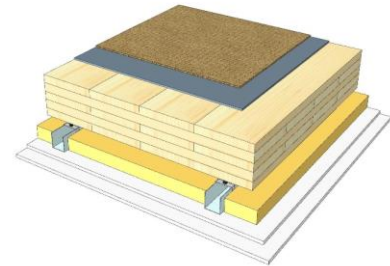
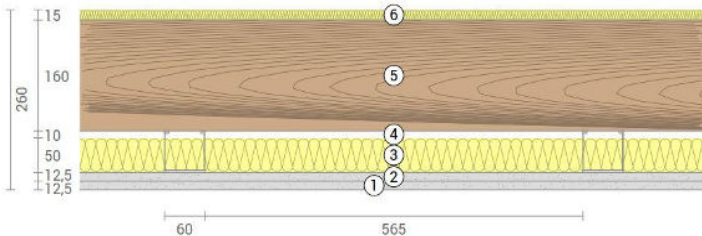
Thermal protection  
W/(m²K)  
**0,35**

Sound insulation  
dB  
**55**

Ecology  
kg CO<sub>2</sub>eq./m²  
**-99**

# GD 09 SC2

Compartment floor / carpet floor  
 SC on CD-profiles, resilient clips



No	mm	Material
1	12,5	Gt-F board
2	12,5	Gt-F board
3	50	Mineral wool
4	60	CD-profile on resilient clips
5	160	KLH® - CLT
6	15	Carpet floor

R*EI (fire attack from below)
<b>120</b> minutes

U-Value
<b>0,35</b> W/(m²K)

Rw
<b>57</b> (-1;-5) dB

Lnw
<b>48</b> (2) dB

Thickness
<b>260</b> mm
Mass per squaremeter
<b>101</b> kg/m²

Global warming potential
<b>-97</b> kg CO <sub>2</sub> eq./m²
Primary energy (n. renewable)
<b>103</b> kWh/m²

Link Ubakus  
[GD 09 SC2 Ubakus](#)

Link pre-dimensioning fire  
[KLH REI 120](#)

Fire resistance  
 R\*EI  
**120**

Thermal protection  
 W/(m²K)  
**0,35**

Sound insulation  
 dB  
**57**

Ecology  
 kg CO<sub>2</sub>eq./m²  
**-97**