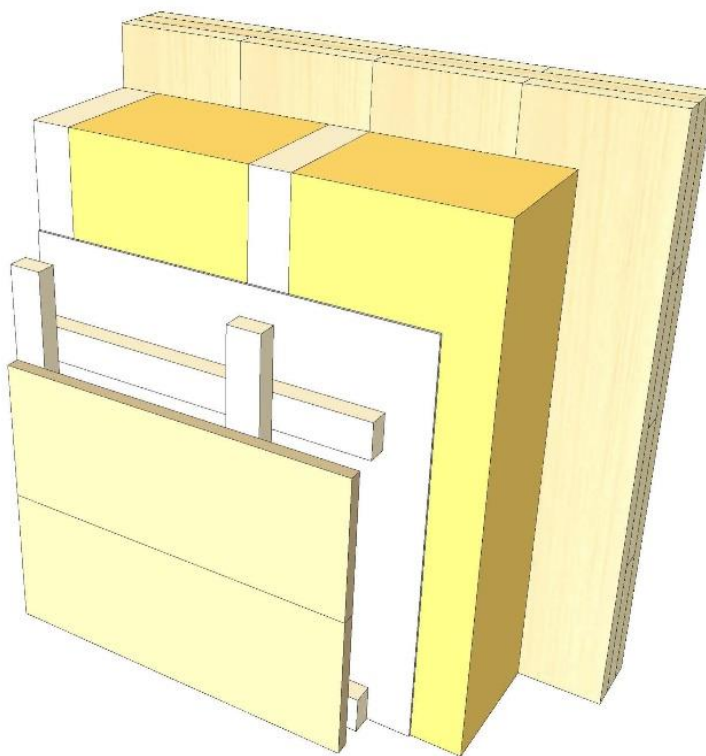


AW 01

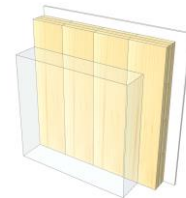
Ventilated timber facade



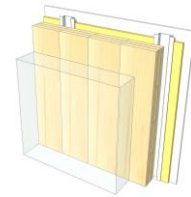
KLH® Visible



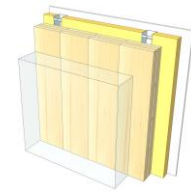
+ G



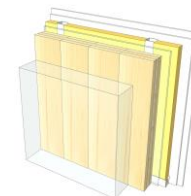
+ RP



+ FF



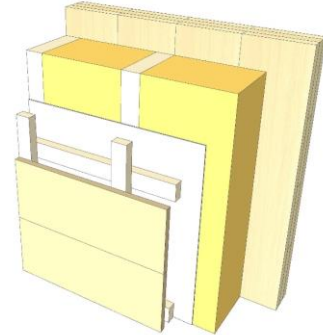
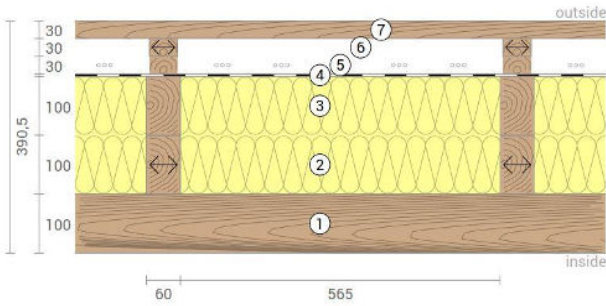
+ FF free / 2*G



	KLH® Visible	+ G	+ RP	+ FF	+ FF free / 2*G
Sound Rw [dB]	44	45	52	55	63
Thermal U [W/m²K]	0,17	0,17	0,16	0,14	0,14
Fire R*EI [min]	30	60	60	90	90
Thickness [mm]	391	403	430	463	476
Ecology [kg CO ₂ eq./m²]	-97	-94	-92	-88	-88

AW 01 V

Exterior wall / ventilated timber facade



No	mm	Material
1	100	KLH® - CLT
2	100	Timber batten, rock wool
3	100	Timber batten, rock wool
4	0,5	Wind barrier
5	30	Timber batten (spruce) vertical
6	30	Timber batten (spruce) horizontal
7	30	Closed spruce formwork

R*EI (fire attack on one side)	30 minutes
--------------------------------	-------------------

U-Value	0,17 W/(m²K)
---------	---------------------

Rw	44 (0;-4) dB
----	---------------------

Thickness	391 mm
Mass per squaremeter	75 kg/m²

Global warming potential	-97 kg CO ₂ eq./m²
Primary energy (n. renewable)	75 kWh/m²

Link Ubakus
[AW 01 V Ubakus](#)

Link pre-dimensioning fire
[KLH REI 30](#)

Fire resistance
 R*EI
30

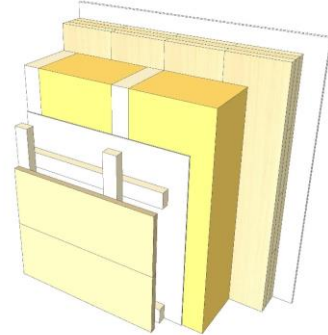
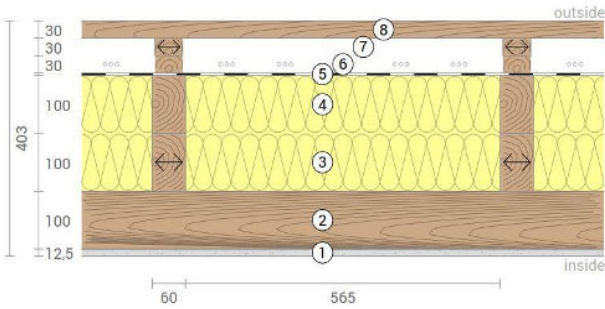
Thermal protection
 W/(m²K)
0,17

Sound insulation
 dB
44

Ecology
 kg CO₂ eq./m²
-97

AW 01 G

Exterior wall / ventilated timber facade
Cladded



No	mm	Material
1	12,5	Gt-F board
2	100	KLH® - CLT
3	100	Timber batten, rock wool
4	100	Timber batten, rock wool
5	0,5	Wind barrier
6	30	Timber batten (spruce) vertical
7	30	Timber batten (spruce) horizontal
8	30	Closed spruce formwork

R*EI (fire attack on one side)
60 minutes

U-Value
0,17 W/(m²K)

Rw
45 (0;-4) dB

Thickness
403 mm
Mass per squaremeter
85 kg/m²

Global warming potential
-94 kg CO ₂ eq./m²
Primary energy (n. renewable)
86 kWh/m²

Link Ubakus
[AW 01 G Ubakus](#)

Link pre-dimensioning fire
[KLH REI 60](#)

Fire resistance
R*EI
60

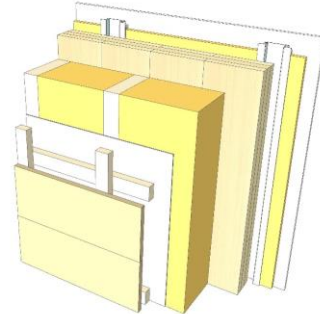
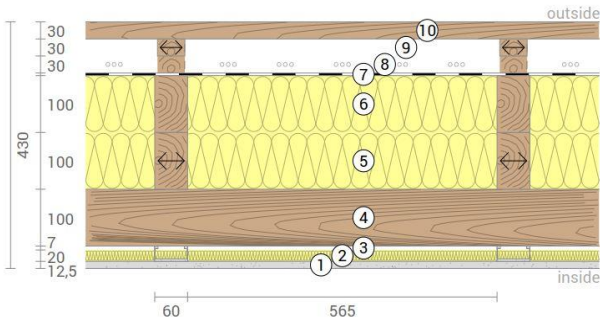
Thermal protection
W/(m²K)
0,17

Sound insulation
dB
45

Ecology
kg CO₂ eq./m²
-94

AW 01 RP

Exterior wall / ventilated timber facade
Resilient profiles



No	mm	Material
1	12,5	Gt-F board
2	20	Mineral wool
3	27	Resilient profiles
4	100	KLH® - CLT
5	100	Timber batten, rock wool
6	100	Timber batten, rock wool
7	0,5	Wind barrier
8	30	Timber batten (spruce) vertical
9	30	Timber batten (spruce) horizontal
10	30	Closed spruce formwork

R*EI (fire attack on one side)
60 minutes

U-Value
0,16 W/(m²K)

Rw
52 (-4;10) dB

Thickness
430 mm
Mass per squaremeter
87 kg/m²

Global warming potential
-92 kg CO ₂ eq./m²
Primary energy (n. renewable)
100 kWh/m²

Link Ubakus
[AW 01 RP Ubakus](#)

Link pre-dimensioning fire
[KLH REI 60](#)

Fire resistance
R*EI
60

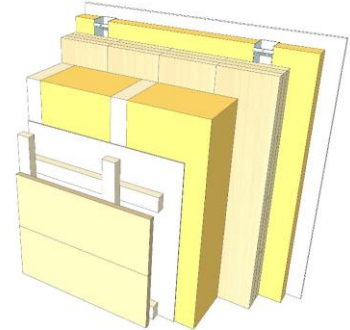
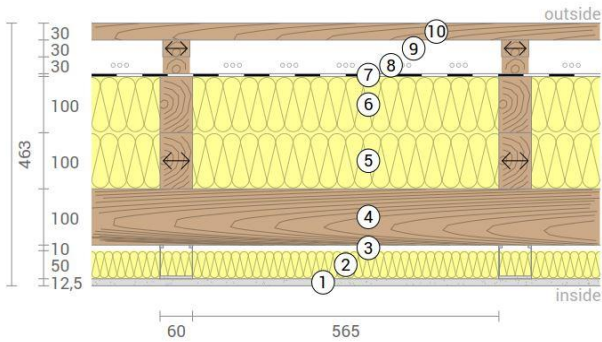
Thermal protection
W/(m²K)
0,16

Sound insulation
dB
52

Ecology
kg CO₂ eq./m²
-92

AW 01 FF

Exterior wall / ventilated timber facade
Facing formwork



No	mm	Material
1	15	Gt-F board
2	50	Rock wool
3	60	CW-profile mounted elastically or free
4	100	KLH® - CLT
5	100	Timber batten, rock wool
6	100	Timber batten, rock wool
7	0,5	Wind barrier
8	30	Timber batten (spruce) vertical
9	30	Timber batten (spruce) horizontal
10	30	Closed spruce formwork

R*EI (fire attack on one side)
90 minutes

U-Value
0,14 W/(m²K)

Rw
55 (-4;11) dB

Thickness
463 mm
Mass per squaremeter
90 kg/m²

Global warming potential
-88 kg CO ₂ eq./m²
Primary energy (n. renewable)
113 kWh/m²

Link Ubakus
[AW 01 FF Ubakus](#)

Link pre-dimensioning fire
[KLH REI 90](#)

Fire resistance
R*EI
90

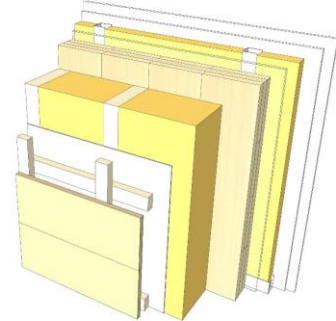
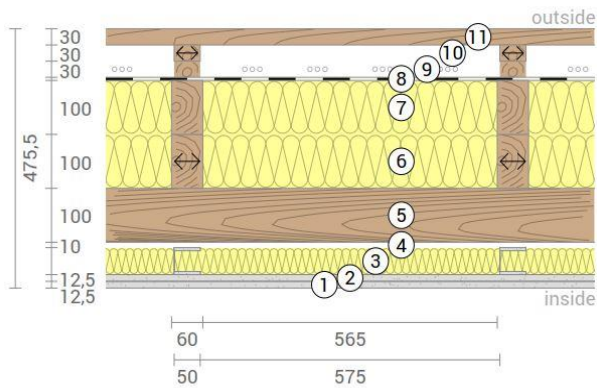
Thermal protection
W/(m²K)
0,14

Sound insulation
dB
55

Ecology
kg CO₂ eq./m²
-88

AW 01 FF2

Exterior wall / ventilated timber facade
Self-supporting formwork



No	mm	Material
1	12,5	Gt-F board
2	12,5	Gt-F board
3	50	CW-profile self-supporting, rock wool
4	10	Air gap
5	100	KLH® - CLT
6	100	Timber batten, rock wool
7	100	Timber batten, rock wool
8	0,5	Wind barrier
9	30	Timber batten (spruce) vertical
10	30	Timber batten (spruce) horizontal
11	30	Closed spruce formwork

R*EI (fire attack on one side)	90 minutes
--------------------------------	-------------------

U-Value	0,14 W/(m²K)
---------	---------------------

Rw	63 (-4;-10) dB
----	-----------------------

Thickness	476 mm
Mass per squaremeter	98 kg/m²

Global warming potential	-88 kg CO ₂ eq./m²
Primary energy (n. renewable)	117 kWh/m²

Link Ubakus
[AW 01 FF2 Ubakus](#)

Link pre-dimensioning fire
[KLH REI 90](#)

Fire resistance
R*EI
90

Thermal protection
W/(m²K)
0,14

Sound insulation
dB
63

Ecology
kg CO₂eq./m²
-88