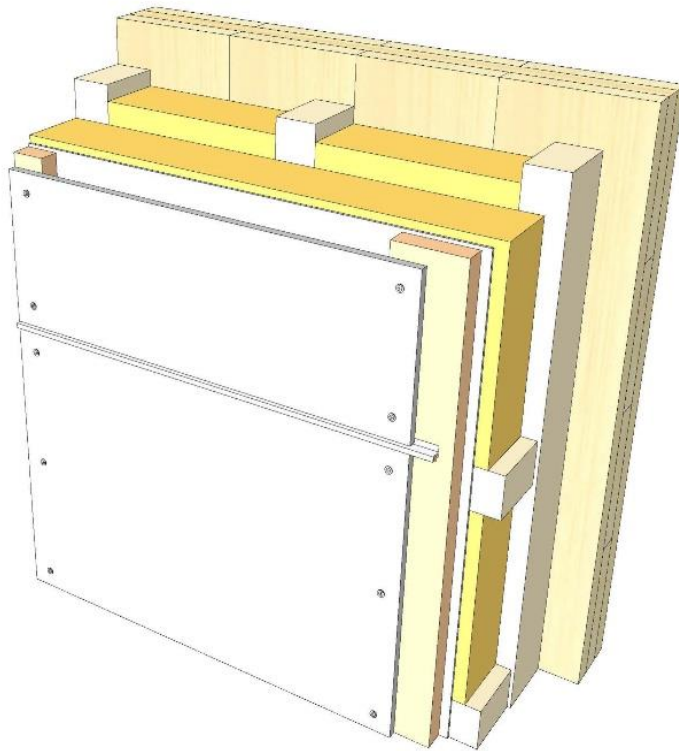


# AW 02

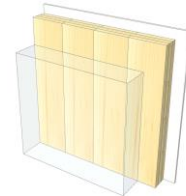
## Ventilated facade panel



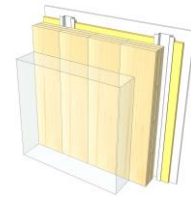
KLH® Visible



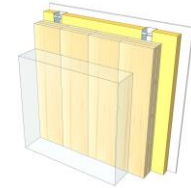
+ G



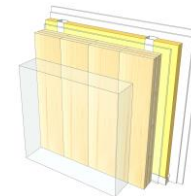
+ RP



+ FF



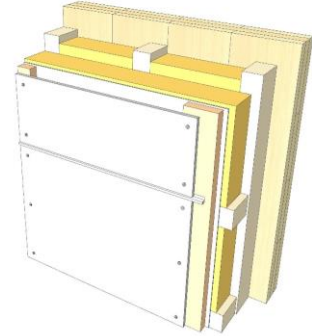
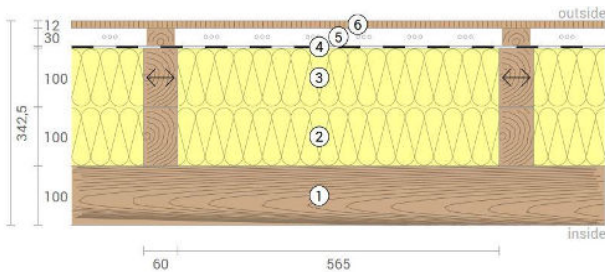
+ FF free / 2\*G



	KLH® Visible	+ G	+ RP	+ FF	+ FF free / 2*G
<b>Sound</b> Rw [dB]	53	54	58	60	66
<b>Thermal</b> U [W/m²K]	0,17	0,17	0,16	0,14	0,14
<b>Fire</b> R*EI [min]	30	60	60	90	90
<b>Thickness</b> [mm]	343	355	382	418	428
<b>Ecology</b> [kg CO <sub>2</sub> eq./m²]	-54	-51	-49	-45	-45

# AW 02 V

## Exterior wall / ventilated facade panel



No	mm	Material
1	100	KLH® - CLT
2	100	Timber batten, rock wool
3	100	Timber batten, rock wool
4	0,5	Wind barrier
5	30	Timber batten (spruce) vertical
6	12	Cement bonded chipboard

<b>R*EI</b> (fire attack on one side)
<b>30</b> minutes

<b>U-Value</b>
<b>0,17</b> W/(m²K)

<b>Rw</b>
<b>53</b> (-2;-7) dB

<b>Thickness</b>
<b>343</b> mm
<b>Mass per squaremeter</b>
<b>74</b> kg/m²

<b>Global warming potential</b>
<b>-54</b> kg CO <sub>2</sub> eq./m²
<b>Primary energy (n. renewable)</b>
<b>132</b> kWh/m²

Link Ubakus  
[AW 02 V Ubakus](#)

Link pre-dimensioning fire  
[KLH REI 30](#)

Fire resistance  
 R\*EI  
**30**

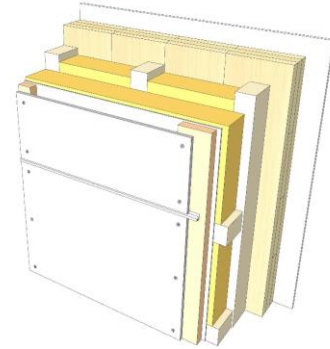
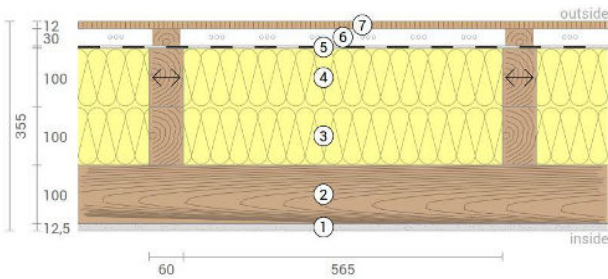
Thermal protection  
 W/(m²K)  
**0,17**

Sound insulation  
 dB  
**53**

Ecology  
 kg CO<sub>2</sub>eq./m²  
**-54**

# AW 02 G

Exterior wall / ventilated facade panel  
Cladded



No	mm	Material
1	12,5	Gt-F board
2	100	KLH® - CLT
3	100	Timber batten, rock wool
4	100	Timber batten, rock wool
5	0,5	Wind barrier
6	30	Timber batten (spruce) vertical
7	12	Cement bonded chipboard

R\*EI (fire attack on one side)  
**60** minutes

U-Value  
**0,17** W/(m²K)

Rw  
**54** (-2;-7) dB

Thickness	<b>355</b> mm
Mass per squaremeter	<b>84</b> kg/m²

Global warming potential	<b>-51</b> kg CO <sub>2</sub> eq./m²
Primary energy (n. renewable)	<b>142</b> kWh/m²

Link Ubakus  
[AW 02 G Ubakus](#)

Link pre-dimensioning fire  
[KLH REI 60](#)

Fire resistance  
R\*EI  
**60**

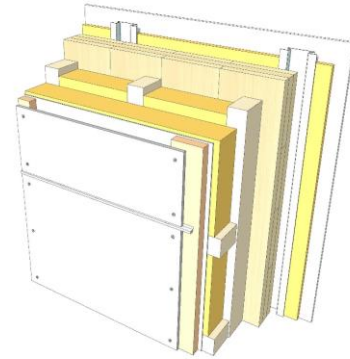
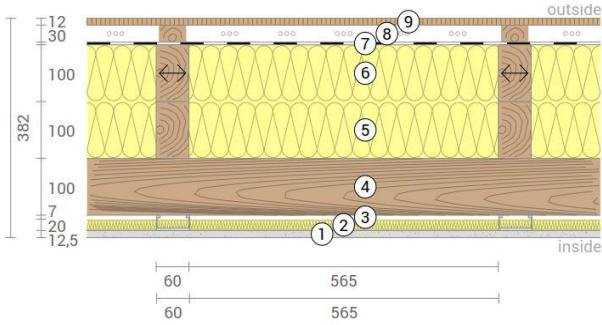
Thermal protection  
W/(m²K)  
**0,17**

Sound insulation  
dB  
**54**

Ecology  
kg CO<sub>2</sub>eq./m²  
**-51**

# AW 02 RP

Exterior wall / ventilated facade panel  
Resilient profiles



No	mm	Material
1	12,5	Gt-F board
2	20	Mineral wool
3	27	Resilient profiles
4	100	KLH® - CLT
5	100	Timber batten, rock wool
6	100	Timber batten, rock wool
7	0,5	Wind barrier
8	30	Timber batten (spruce) vertical
9	12	Cement bonded chipboard

R*EI (fire attack on one side)	<b>60</b> minutes
--------------------------------	-------------------

U-Value	<b>0,16</b> W/(m²K)
---------	---------------------

Rw	<b>58</b> (-4;-10) dB
----	-----------------------

Thickness	<b>382</b> mm
Mass per squaremeter	<b>87</b> kg/m²

Global warming potential	<b>-49</b> kg CO <sub>2</sub> eq./m²
Primary energy (n. renewable)	<b>157</b> kWh/m²

Link Ubakus  
[AW 02 RP Ubakus](#)

Link pre-dimensioning fire  
[KLH REI 60](#)

Fire resistance  
R\*EI  
**60**

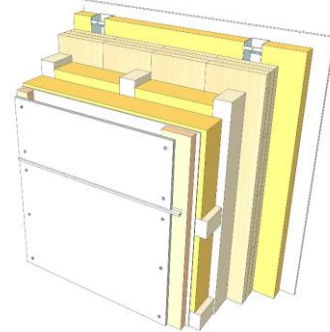
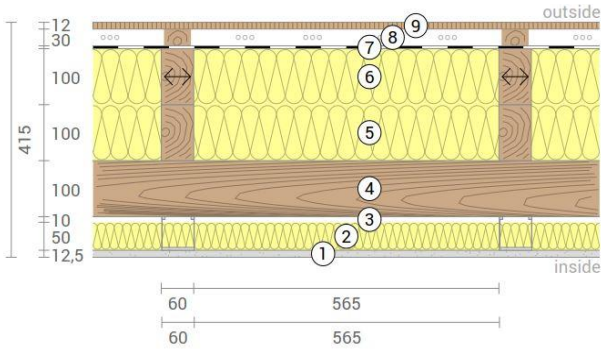
Thermal protection  
W/(m²K)  
**0,16**

Sound insulation  
dB  
**58**

Ecology  
kg CO<sub>2</sub> eq./m²  
**-49**

# AW 02 FF

Exterior wall / ventilated facade panel  
Facing formwork



No	mm	Material
1	15	Gt-F board
2	50	Rock wool
3	60	CW-profile mounted elastically or free
4	100	KLH® - CLT
5	100	Timber batten, rock wool
6	100	Timber batten, rock wool
7	0,5	Wind barrier
8	30	Timber batten (spruce) vertical
9	12	Cement bonded chipboard

R\*EI (fire attack on one side)  
**90** minutes

U-Value  
**0,14** W/(m²K)

Rw  
**60** (-4;10) dB

Thickness	<b>418</b> mm
Mass per squaremeter	<b>91</b> kg/m²

Global warming potential	<b>-45</b> kg CO <sub>2</sub> eq./m²
Primary energy (n. renewable)	<b>170</b> kWh/m²

Link Ubakus  
[AW 02 FF Ubakus](#)

Link pre-dimensioning fire  
[KLH REI 90](#)

Fire resistance  
R\*EI  
**90**

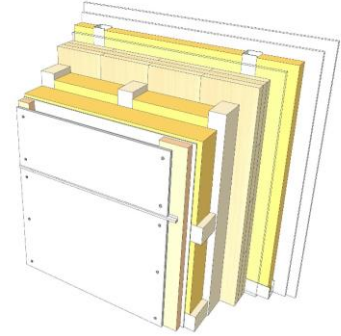
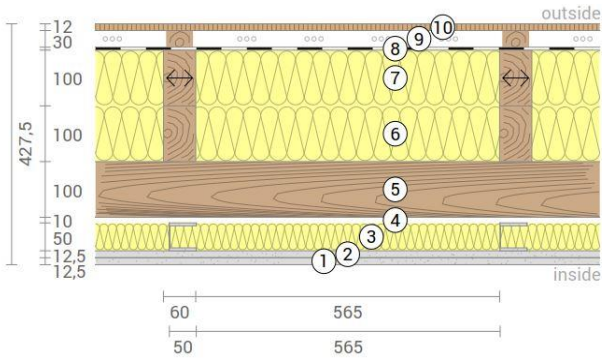
Thermal protection  
W/(m²K)  
**0,14**

Sound insulation  
dB  
**60**

Ecology  
kg CO<sub>2</sub>eq./m²  
**-45**

# AW 02 FF2

Exterior wall / ventilated facade panel  
Self-supporting formwork



No	mm	Material
1	12,5	Gt-F board
2	12,5	Gt-F board
3	50	CW-profile self-supporting, rock wool
4	10	Air gap
5	100	KLH® - CLT
6	100	Timber batten, rock wool
7	100	Timber batten, rock wool
8	0,5	Wind barrier
9	30	Timber batten (spruce) vertical
10	12	Cement bonded chipboard

R*EI (fire attack on one side)	<b>90</b> minutes
--------------------------------	-------------------

U-Value	<b>0,14</b> W/(m²K)
---------	---------------------

Rw	<b>66</b> (-4;-10) dB
----	-----------------------

Thickness	<b>428</b> mm
Mass per squaremeter	<b>98</b> kg/m²

Global warming potential	<b>-45</b> kg CO <sub>2</sub> eq./m²
Primary energy (n. renewable)	<b>173</b> kWh/m²

Link Ubakus  
[AW 02 FF2 Ubakus](#)

Link pre-dimensioning fire  
[KLH REI 90](#)

Fire resistance  
R\*EI  
**90**

Thermal protection  
W/(m²K)  
**0,14**

Sound insulation  
dB  
**66**

Ecology  
kg CO<sub>2</sub>eq./m²  
**-45**