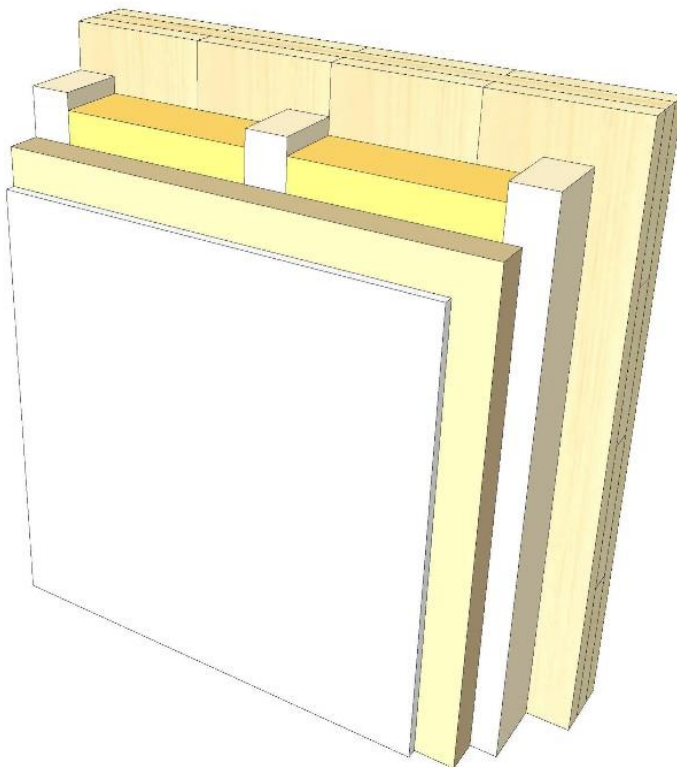
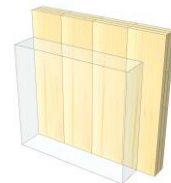


AW 03

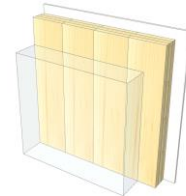
Plaster baseboard



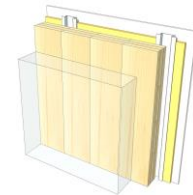
KLH® Visible



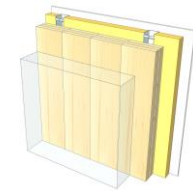
+ G



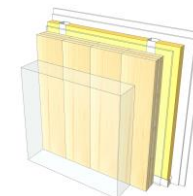
+ RP



+ FF



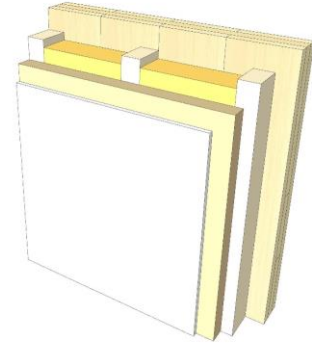
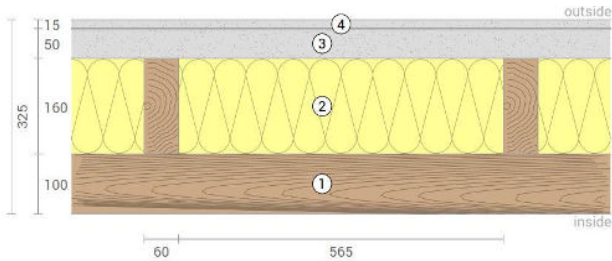
+ FF free / 2*G



	KLH® Visible	+ G	+ RP	+ FF	+ FF free / 2*G
Sound R_w [dB]	48	49	54	55	63
Thermal U [W/m ² K]	0,19	0,18	0,17	0,15	0,15
Fire R^*EI [min]	30	60	60	90	90
Thickness [mm]	325	338	365	398	410
Ecology [kg CO ₂ eq./m ²]	-60	-58	-55	-51	-50

AW 03 V

Exterior wall / baseboard



No	mm	Material
1	100	KLH® - CLT
2	160	Timber batten, mineral wool
3	50	Minerally bonded wood wool insulation
4	10	Plaster (light and normal)

R*EI (fire attack on one side)
30 minutes

U-Value
0,19 W/(m²K)

Rw
48 (-2;-7) dB

Thickness
325 mm
Mass per squaremeter
91 kg/m²

Global warming potential
-60 kg CO ₂ eq./m²
Primary energy (n. renewable)
122 kWh/m²

Link Ubakus
[AW 03 V Ubakus](#)

Link pre-dimensioning fire
[KLH REI 30](#)

Fire resistance
 R*EI
30

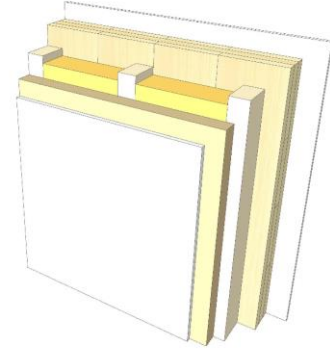
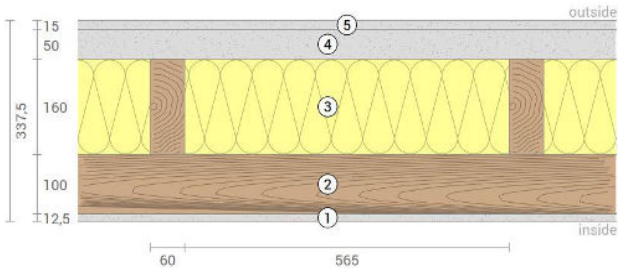
Thermal protection
 W/(m²K)
0,19

Sound insulation
 dB
48

Ecology
 kg CO₂eq./m²
-60

AW 03 G

Exterior wall / baseboard
Cladded



No	mm	Material
1	12,5	Gt-F board
2	100	KLH® - CLT
3	160	Timber batten, mineral wool
4	50	Minerally bonded wood wool insulation
5	10	Plaster (light and normal)

R*EI (fire attack on one side)
60 minutes

U-Value
0,18 W/(m²K)

Rw
49 (-2;-7) dB

Thickness
338 mm
Mass per squaremeter
101 kg/m²

Global warming potential
-58 kg CO ₂ eq./m²
Primary energy (n. renewable)
132 kWh/m²

Link Ubakus
[AW 03 G Ubakus](#)

Link pre-dimensioning fire
[KLH REI 60](#)

Fire resistance
R*EI
60

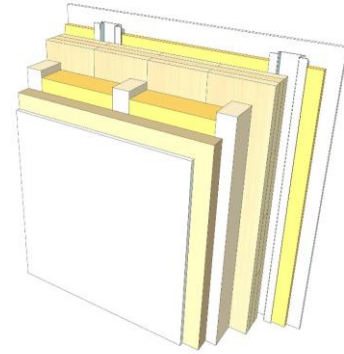
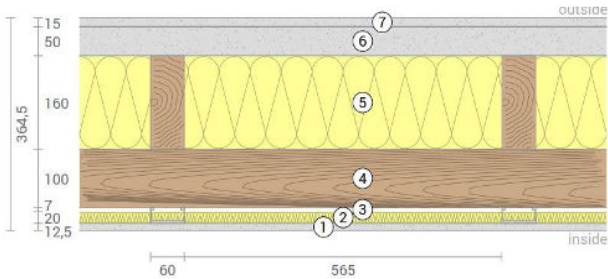
Thermal protection
W/(m²K)
0,18

Sound insulation
dB
49

Ecology
kg CO₂eq./m²
-58

AW 03 RP

Exterior wall / baseboard
Resilient profiles



No	mm	Material
1	12,5	Gt-F board
2	20	Mineral wool
3	27	Resilient profiles
4	100	KLH® - CLT
5	160	Timber batten, mineral wool
6	50	Minerally bonded wood wool insulation
7	10	Plaster (light and normal)

R*EI (fire attack on one side)
60 minutes

U-Value
0,17 W/(m²K)

Rw
54 (-5;11) dB

Thickness
365 mm
Mass per squaremeter
103 kg/m²

Global warming potential
-55 kg CO ₂ eq./m²
Primary energy (n. renewable)
144 kWh/m²

Link Ubakus
[AW 03 RP Ubakus](#)

Link pre-dimensioning fire
[KLH REI 60](#)

Fire resistance
R*EI
60

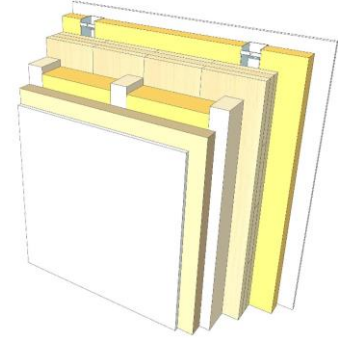
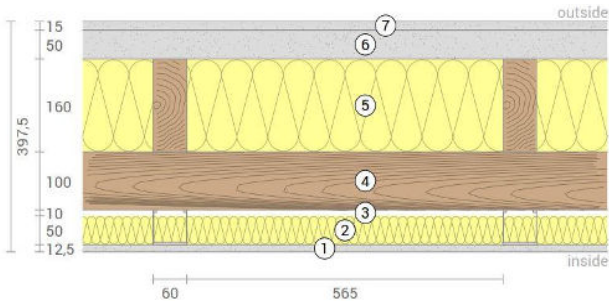
Thermal protection
W/(m²K)
0,17

Sound insulation
dB
54

Ecology
kg CO₂eq./m²
-55

AW 03 FF

Exterior wall / baseboard
Facing formwork



No	mm	Material
1	15	Gt-F board
2	50	Rock wool
3	60	Resilient profiles
4	100	KLH® - CLT
5	160	Timber batten, mineral wool
6	50	Minerally bonded wood wool insulation
7	10	Plaster (light and normal)

R*EI (fire attack on one side)
90 minutes

U-Value
0,15 W/(m²K)

Rw
55 (-4;10) dB

Thickness
398 mm
Mass per squaremeter
105 kg/m²

Global warming potential
-51 kg CO ₂ eq./m²
Primary energy (n. renewable)
156 kWh/m²

Link Ubakus
[AW 03 FF Ubakus](#)

Link pre-dimensioning fire
[KLH REI 90](#)

Fire resistance
R*EI
90

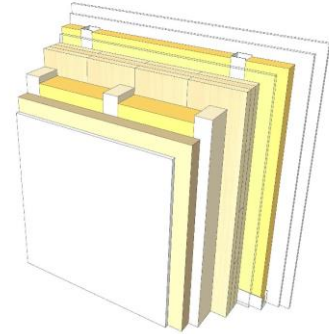
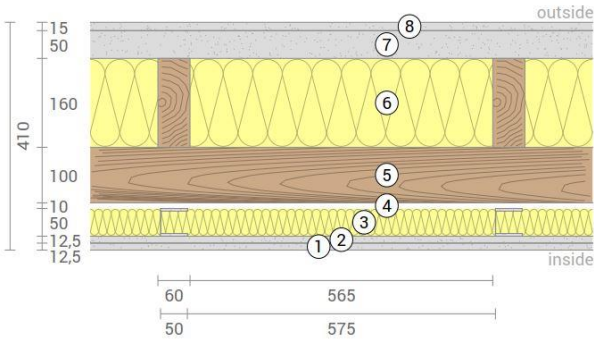
Thermal protection
W/(m²K)
0,15

Sound insulation
dB
55

Ecology
kg CO₂eq./m²
-51

AW 03 FF2

Exterior wall / baseboard
Self-supporting formwork



No	mm	Material
1	12,5	Gt-F board
2	12,5	Gt-F board
3	50	CW-profile mounted elastically or free
4	10	Air gap
5	100	KLH® - CLT
6	160	Timber batten, mineral wool
7	50	Minerally bonded wood wool insulation
8	10	Plaster (light and normal)

R*EI (fire attack on one side)
90 minutes

U-Value
0,15 W/(m²K)

Rw
63 (-3;-10) dB

Thickness
410 mm
Mass per squaremeter
113 kg/m²

Global warming potential
-50 kg CO ₂ eq./m²
Primary energy (n. renewable)
160 kWh/m²

Link Ubakus
[AW 03 FF2 Ubakus](#)

Link pre-dimensioning fire
[KLH REI 90](#)

Fire resistance
R*EI
90

Thermal protection
W/(m²K)
0,15

Sound insulation
dB
63

Ecology
kg CO₂eq./m²
-50