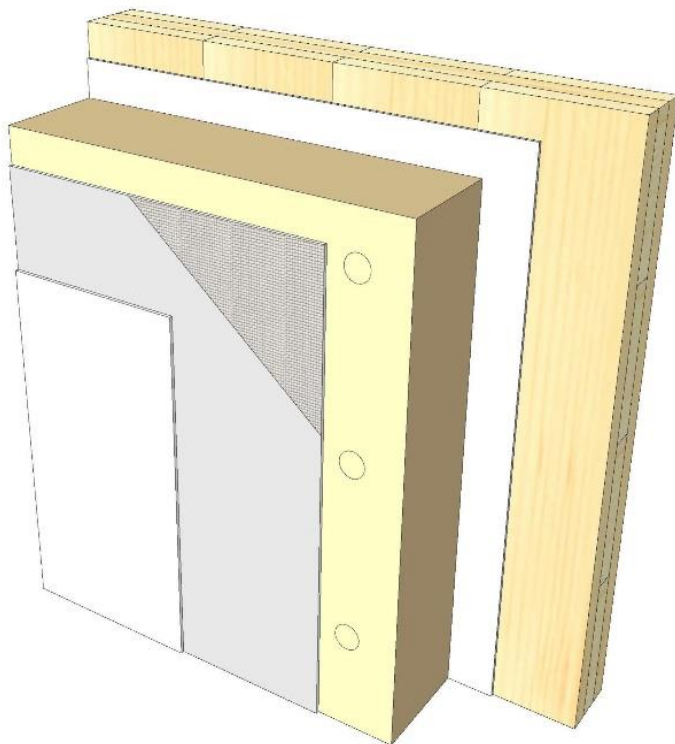
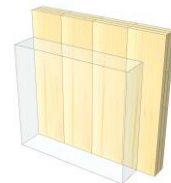


# AW 06

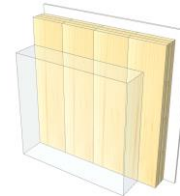
## ETICS - Wood fiber



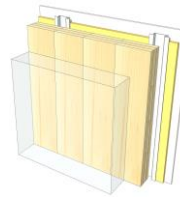
KLH® Visible



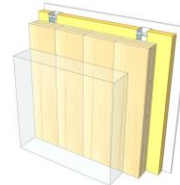
+ G



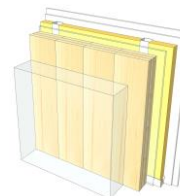
+ RP



+ FF



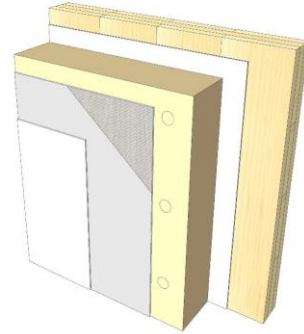
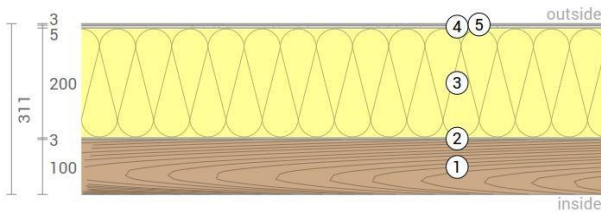
+ FF free / 2\*G



	KLH® Visible	+ G	+ RP	+ FF	+ FF free / 2*G
<b>Sound</b> Rw [dB]	39	40	45	48	59
<b>Thermal</b> U [W/m²K]	0,17	0,17	0,16	0,14	0,14
<b>Fire</b> R*EI [min]	30	60	60	90	90
<b>Thickness</b> [mm]	311	324	351	386	396
<b>Ecology</b> [kg CO <sub>2</sub> eq./m²]	-94	-91	-88	-84	-84

# AW 06 V

## Exterior wall / ETICS - wood fiber



No	mm	Material
1	100	KLH® - CLT
2	3	Adhesive
3	200	Wood fiber insulation ( $s' \leq 10 \text{ MN/m}^3$ )
4	5	Reinforcing mortar with fibernet
5	3	Plaster finish

R*EI (fire attack on one side)
<b>30</b> minutes

U-Value
<b>0,17</b> W/(m²K)

Rw
<b>39</b> (-1;-6) dB

Thickness
<b>311</b> mm
Mass per squaremeter
<b>92</b> kg/m²

Global warming potential
<b>-94</b> kg CO <sub>2</sub> eq./m²
Primary energy (n. renewable)
<b>131</b> kWh/m²

Link Ubakus  
[AW 06 V Ubakus](#)

Link pre-dimensioning fire  
[KLH REI 30](#)

Fire resistance  
R\*EI  
**30**

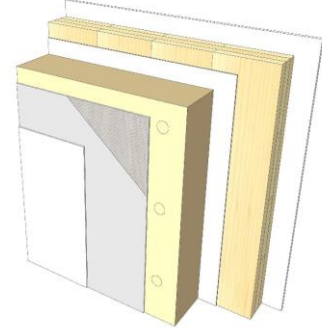
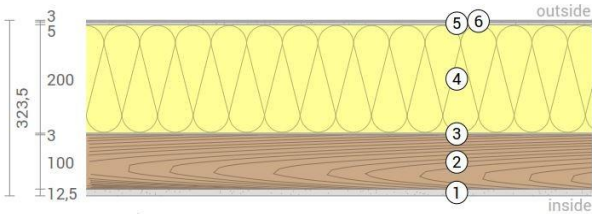
Thermal protection  
W/(m²K)  
**0,17**

Sound insulation  
dB  
**39**

Ecology  
kg CO<sub>2</sub> eq./m²  
**-94**

# AW 06 G

Exterior wall / ETICS - wood fiber  
Cladded



No	mm	Material
1	12,5	Gt-F board
2	100	KLH® - CLT
3	3	Adhesive
4	200	Wood fiber insulation ( $s' \leq 10 \text{ MN/m}^3$ )
5	5	Reinforcing mortar with fibernet
6	3	Plaster finish

R*EI (fire attack on one side)
<b>60</b> minutes

U-Value
<b>0,17</b> W/(m <sup>2</sup> K)

Rw
<b>40</b> (-1;-6) dB

Thickness
<b>324</b> mm
Mass per squaremeter
<b>102</b> kg/m <sup>2</sup>

Global warming potential
<b>-91</b> kg CO <sub>2</sub> eq./m <sup>2</sup>
Primary energy (n. renewable)
<b>142</b> kWh/m <sup>2</sup>

Link Ubakus  
[AW 06 G Ubakus](#)

Link pre-dimensioning fire  
[KLH REI 60](#)

Fire resistance  
R\*EI  
**60**

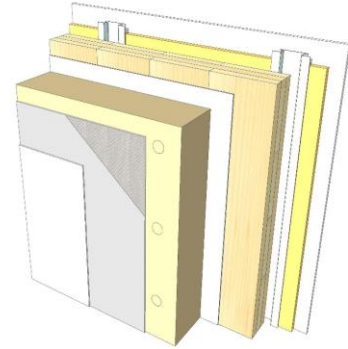
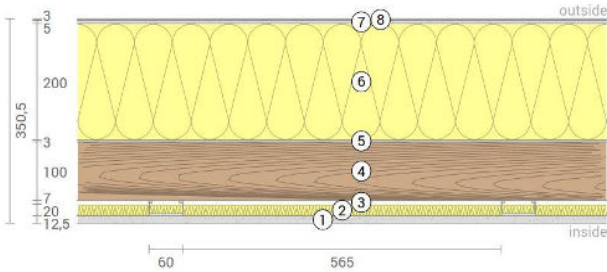
Thermal protection  
W/(m<sup>2</sup>K)  
**0,17**

Sound insulation  
dB  
**40**

Ecology  
kg CO<sub>2</sub>eq./m<sup>2</sup>  
**-91**

# AW 06 RP

Exterior wall / ETICS - wood fiber  
Resilient profiles



No	mm	Material
1	12,5	Gt-F board
2	20	Mineral wool
3	27	Resilient profiles
4	100	KLH® - CLT
5	3	Adhesive
6	200	Wood fiber insulation ( $s' \leq 10 \text{ MN/m}^3$ )
7	5	Reinforcing mortar with fibernet
8	3	Plaster finish

R\*EI (fire attack on one side)  
**60** minutes

U-Value  
**0,16** W/(m<sup>2</sup>K)

Rw  
**45** (-3;-10) dB

Thickness	<b>351</b> mm
Mass per squaremeter	<b>104</b> kg/m <sup>2</sup>

Global warming potential	<b>-88</b> kg CO <sub>2</sub> eq./m <sup>2</sup>
Primary energy (n. renewable)	<b>153</b> kWh/m <sup>2</sup>

Link Ubakus  
[AW 06 RP Ubakus](#)

Link pre-dimensioning fire  
[KLH REI 60](#)

Fire resistance  
R\*EI  
**60**

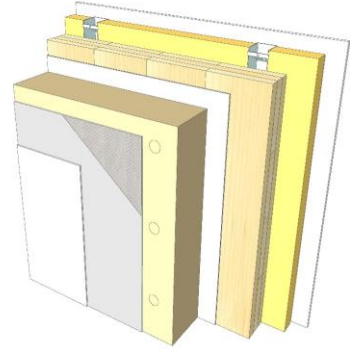
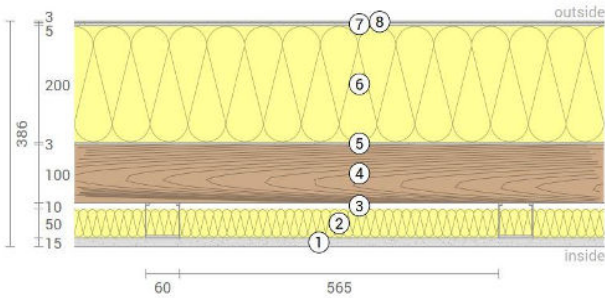
Thermal protection  
W/(m<sup>2</sup>K)  
**0,16**

Sound insulation  
dB  
**45**

Ecology  
kg CO<sub>2</sub>eq./m<sup>2</sup>  
**-88**

# AW 06 FF

Exterior wall / ETICS - wood fiber  
Facing formwork



No	mm	Material
1	15	Gt-F board
2	50	Rock wool
3	60	CW-profile mounted elastically or free
4	100	KLH® - CLT
5	3	Adhesive
6	200	Wood fiber insulation ( $s' \leq 10 \text{ MN/m}^3$ )
7	5	Reinforcing mortar with fibernet
8	3	Plaster finish

R*EI (fire attack on one side)
<b>90</b> minutes

U-Value
<b>0,14</b> W/(m²K)

Rw
<b>48</b> (-4;11) dB

Thickness
<b>386</b> mm
Mass per squaremeter
<b>108</b> kg/m²

Global warming potential
<b>-84</b> kg CO <sub>2</sub> eq./m²
Primary energy (n. renewable)
<b>165</b> kWh/m²

Link Ubakus  
[AW 06 FF Ubakus](#)

Link pre-dimensioning fire  
[KLH REI 90](#)

Fire resistance  
R\*EI  
**90**

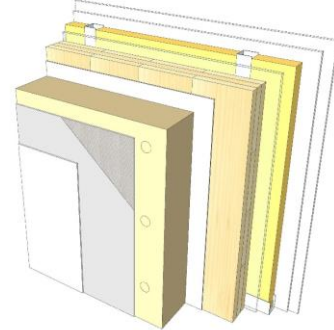
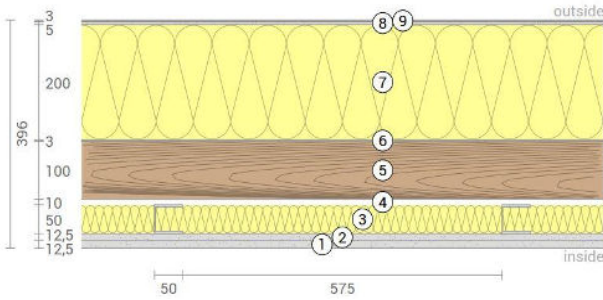
Thermal protection  
W/(m²K)  
**0,14**

Sound insulation  
dB  
**48**

Ecology  
kg CO<sub>2</sub>eq./m²  
**-84**

# AW 06 FF2

Exterior wall / ETICS - wood fiber  
Self-supporting formwork



No	mm	Material
1	12,5	Gt-F board
2	12,5	Gt-F board
3	50	CW-profile self-supporting, rock wool
4	10	Air gap
5	100	KLH® - CLT
6	3	Adhesive
7	200	Wood fiber insulation ( $s' \leq 10 \text{ MN/m}^3$ )
8	5	Reinforcing mortar with fibernet
9	3	Plaster finish

R*EI (fire attack on one side)
<b>90</b> minutes

U-Value
<b>0,14</b> W/(m <sup>2</sup> K)

Rw
<b>59</b> (-5;-12 dB)

Thickness
<b>396</b> mm
Mass per squaremeter
<b>114</b> kg/m <sup>2</sup>

Global warming potential
<b>-84</b> kg CO <sub>2</sub> eq./m <sup>2</sup>
Primary energy (n. renewable)
<b>169</b> kWh/m <sup>2</sup>

Link Ubakus  
[AW 06 FF2 Ubakus](#)

Link pre-dimensioning fire  
[KLH REI 90](#)

Fire resistance  
R\*EI  
**90**

Thermal protection  
W/(m<sup>2</sup>K)  
**0,14**

Sound insulation  
dB  
**59**

Ecology  
kg CO<sub>2</sub> eq./m<sup>2</sup>  
**-84**