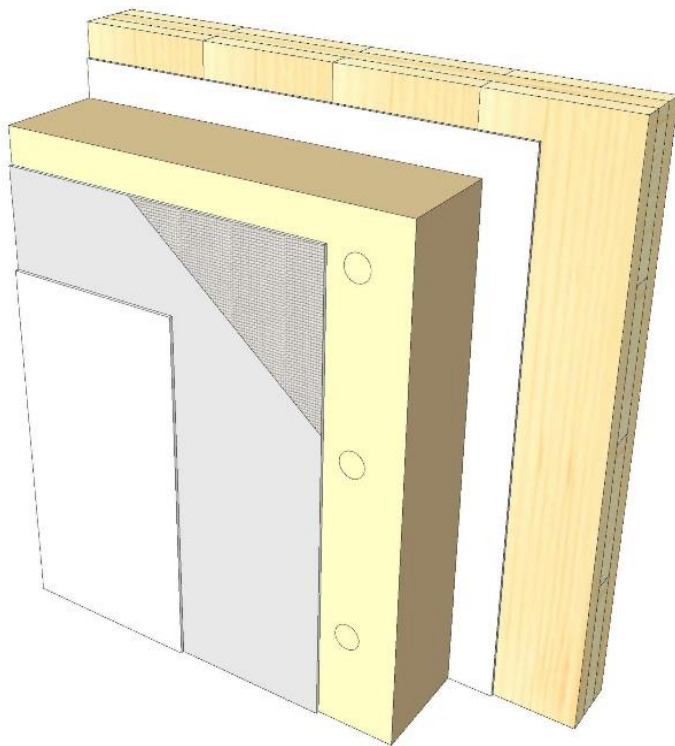
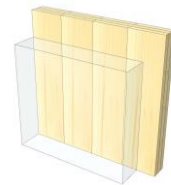


AW 07

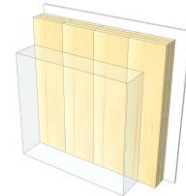
ETICS - Hemp



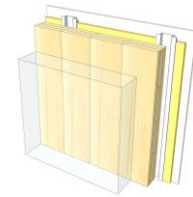
KLH® Visible



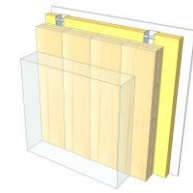
+ G



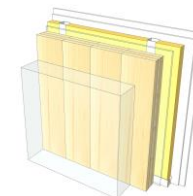
+ RP



+ FF



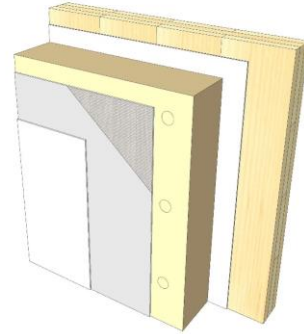
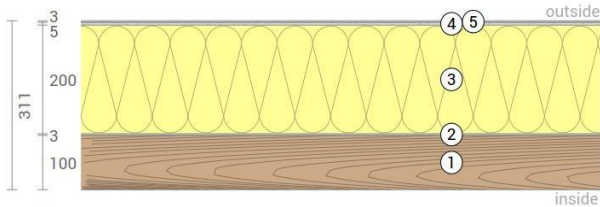
+ FF free / 2*G



	KLH® Visible	+ G	+ RP	+ FF	+ FF free / 2*G
Sound R_w [dB]	54	55	57	59	67
Thermal U [W/m^2K]	0,18	0,18	0,16	0,15	0,14
Fire R^*EI [min]	30	60	60	90	90
Thickness [mm]	311	324	351	386	396
Ecology [$kg CO_2 eq./m^2$]	-58	-56	-52	-48	-48

AW 07 V

Exterior wall / ETICS - hemp



No	mm	Material
1	100	KLH® - CLT
2	3	Adhesive
3	200	Hemp insulation ($s' \leq 4 \text{ MN/m}^3$)
4	5	Reinforcing mortar with fibernet
5	3	Plaster finish

R*EI (fire attack on one side)
30 minutes

U-Value
0,18 W/(m²K)

Rw
54 (-2;-7) dB

Thickness
311 mm
Mass per squaremeter
72 kg/m²

Global warming potential
-58 kg CO ₂ eq./m²
Primary energy (n. renewable)
136 kWh/m²

Link Ubakus
[AW 07 V Ubakus](#)

Link pre-dimensioning fire
[KLH REI 30](#)

Fire resistance
R*EI
30

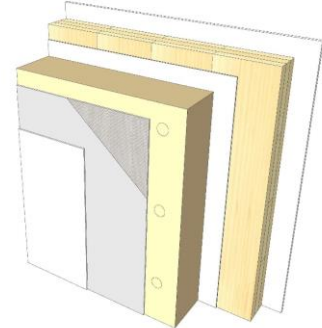
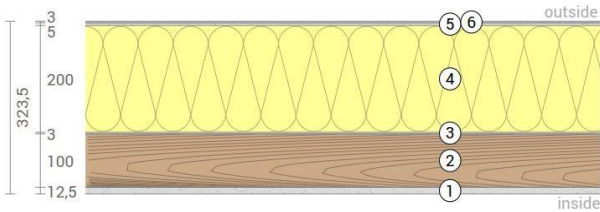
Thermal protection
W/(m²K)
0,18

Sound insulation
dB
54

Ecology
kg CO₂eq./m²
-58

AW 07 G

Exterior wall / ETICS - hemp
Cladded



No	mm	Material
1	12,5	Gt-F board
2	100	KLH® - CLT
3	3	Adhesive
4	200	Hemp insulation ($s' \leq 4 \text{ MN/m}^3$)
5	5	Reinforcing mortar with fibernet
6	3	Plaster finish

R*EI (fire attack on one side)	60 minutes
--------------------------------	-------------------

U-Value	0,18 W/(m²K)
---------	---------------------

Rw	55 (-2;-7) dB
----	----------------------

Thickness	324 mm
Mass per squaremeter	82 kg/m²

Global warming potential	-56 kg CO ₂ eq./m²
Primary energy (n. renewable)	146 kWh/m²

Link Ubakus
[AW 07 G Ubakus](#)

Link pre-dimensioning fire
[KLH REI 60](#)

Fire resistance
R*EI
60

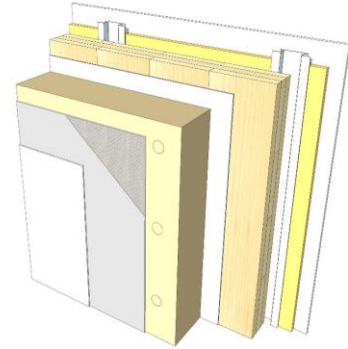
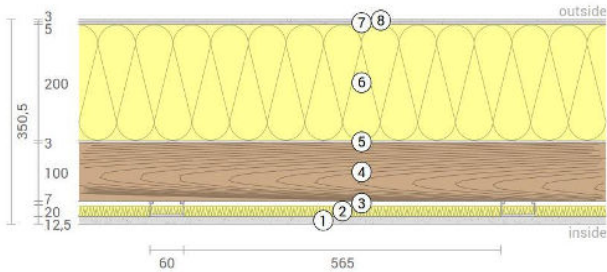
Thermal protection
W/(m²K)
0,18

Sound insulation
dB
55

Ecology
kg CO₂eq./m²
-56

AW 07 RP

Exterior wall / ETICS - hemp
Resilient profiles



No	mm	Material
1	12,5	Gt-F board
2	20	Mineral wool
3	30	Resilient profiles
4	100	KLH® - CLT
5	3	Adhesive
6	200	Hemp insulation ($s' \leq 4 \text{ MN/m}^3$)
7	5	Reinforcing mortar with fibernet
8	3	Plaster finish

R*EI (fire attack on one side)
60 minutes

U-Value
0,16 W/(m ² K)

Rw
57 (-2;-8) dB

Thickness
351 mm
Mass per squaremeter
83 kg/m ²

Global warming potential
-52 kg CO ₂ eq./m ²
Primary energy (n. renewable)
157 kWh/m ²

Link Ubakus
[AW 07 RP Ubakus](#)

Link pre-dimensioning fire
[KLH REI 60](#)

Fire resistance
R*EI
60

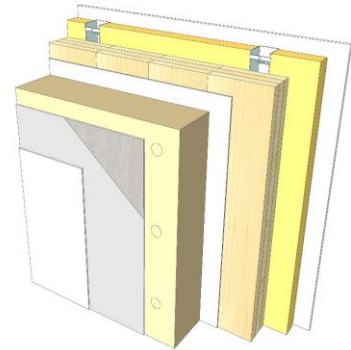
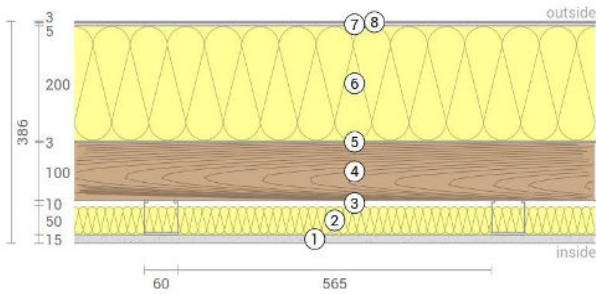
Thermal protection
W/(m²K)
0,16

Sound insulation
dB
57

Ecology
kg CO₂ eq./m²
-52

AW 07 FF

Exterior wall / ETICS - hemp
Facing formwork



No	mm	Material
1	15	Gt-F board
2	50	Rock wool
3	60	CW-profile mounted elastically or free
4	100	KLH® - CLT
5	3	Adhesive
6	200	Hemp insulation ($s' \leq 4 \text{ MN/m}^3$)
7	5	Reinforcing mortar with fibernet
8	3	Plaster finish

R*EI (fire attack on one side)
90 minutes

U-Value
0,15 W/(m²K)

Rw
59 (-2;-8) dB

Thickness
386 mm
Mass per squaremeter
87 kg/m²

Global warming potential
-48 kg CO ₂ eq./m²
Primary energy (n. renewable)
169 kWh/m²

Link Ubakus
[AW 07 FF Ubakus](#)

Link pre-dimensioning fire
[KLH REI 90](#)

Fire resistance
R*EI
90

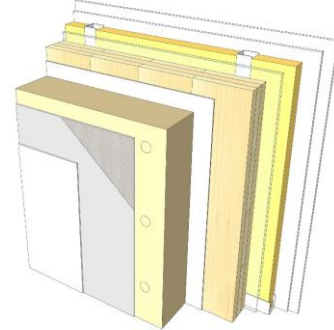
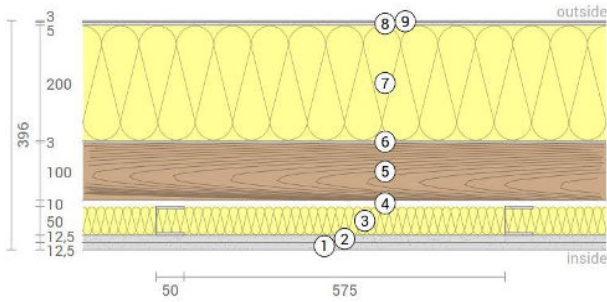
Thermal protection
W/(m²K)
0,15

Sound insulation
dB
59

Ecology
kg CO₂ eq./m²
-48

AW 07 FF2

Exterior wall / ETICS - hemp
Self-supporting formwork



No	mm	Material
1	12,5	Gt-F board
2	12,5	Gt-F board
3	50	CW-profile self-supporting, rock wool
4	10	Air gap
5	100	KLH® - CLT
6	3	Adhesive
7	200	Hemp insulation ($s' \leq 4 \text{ MN/m}^3$)
8	5	Reinforcing mortar with fibernet
9	3	Plaster finish

R*EI (fire attack on one side)
90 minutes

U-Value
0,14 W/(m²K)

Rw
67 (-4;-10 dB)

Thickness	396 mm
Mass per squaremeter	94 kg/m ²

Global warming potential	-48 kg CO ₂ eq./m ²
Primary energy (n. renewable)	174 kWh/m ²

Link Ubakus
[AW 07 FF2 Ubakus](#)

Link pre-dimensioning fire
[KLH REI 90](#)

Fire resistance
R*EI
90

Thermal protection
W/(m²K)
0,14

Sound insulation
dB
67

Ecology
kg CO₂ eq./m²
-48