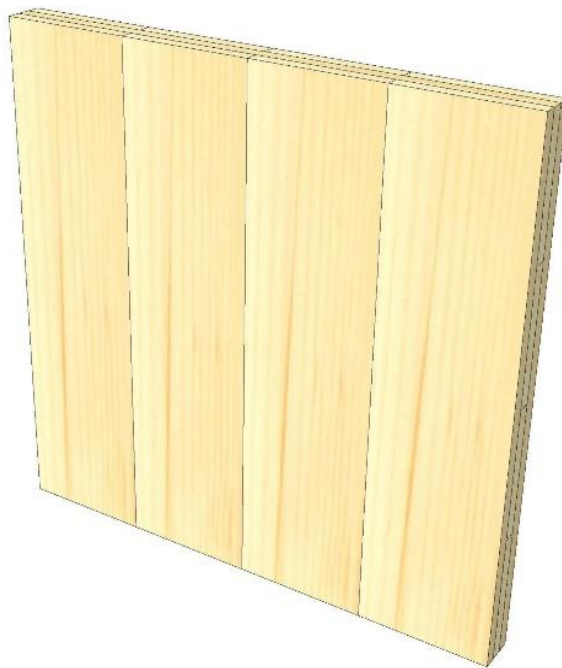
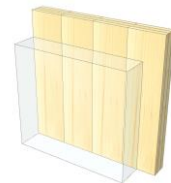


IW 01

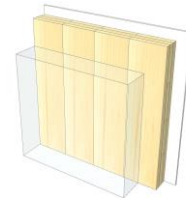
KLH® 3s 60



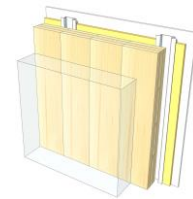
KLH® Visible



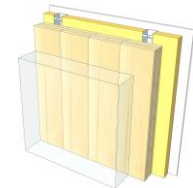
+ G



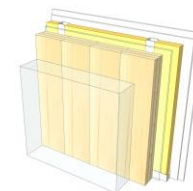
+ RP



+ FF



+ FF free / 2*G



	KLH® Visible	+ G	+ RP	+ FF	+ FF free / 2*G
Sound R_w [dB]	29	30	38	40	49
Thermal U [W/m^2K]	1,32	1,24	0,76	0,53	0,50
Fire R^*EI [min]	0	0	0	0	0
Thickness [mm]	60	73	100	135	145
Ecology [$kg\ CO_2\ eq./m^2$]	-40	-38	-35	-31	-31

IW 01 V

Interior wall / KLH® - CLT 60 TT



No	mm	Material
1	60	KLH® - CLT

R*EI (fire attack on both sides)
0 minutes

U-Value
1,32 W/(m²K)

Rw
29 (-1;3) dB

Thickness
60 mm
Mass per squaremeter
28 kg/m²

Global warming potential
-40 kg CO ₂ eq./m²
Primary energy (n. renewable)
23 kWh/m²

Link Ubakus
[IW 01 V Ubakus](#)

Link pre-dimensioning fire
[KLH REI 0](#)

Fire protection
R*EI
0

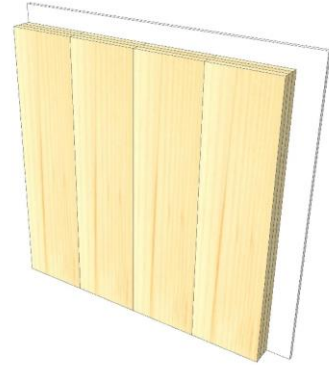
Thermal protection
W/(m²K)
1,32

Sound insulation
dB
29

Ecology
kg CO₂eq./m²
-40

IW 01 G

Interior wall / KLH® - CLT 60 TT
Cladded



No	mm	Material
1	12,5	Gt-F board
2	60	KLH® - CLT

R*EI (fire attack on both sides)
0 minutes

U-Value
1,24 W/(m²K)

Rw
30 (-1;-3) dB

Thickness
73 mm
Mass per squaremeter
38 kg/m²

Global warming potential
-38 kg CO ₂ eq./m²
Primary energy (n. renewable)
34 kWh/m²

Link Ubakus
[IW 01 G Ubakus](#)

Link pre-dimensioning fire
[KLH REI 0](#)

Fire protection
R*EI
0

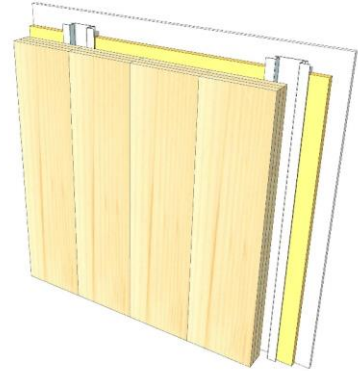
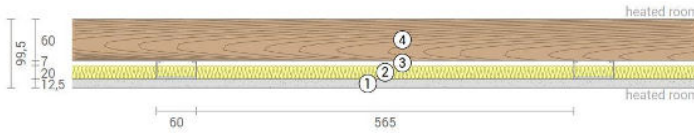
Thermal protection
W/(m²K)
1,24

Sound insulation
dB
30

Ecology
kg CO₂ eq./m²
-38

IW 01 RP

Interior wall / KLH® - CLT 60 TT
Resilient profile



No	mm	Material
1	12,5	Gt-F board
2	20	Mineral wool
3	27	Resilient profile
4	60	KLH® - CLT

R*EI (fire attack on both sides)
0 minutes

U-Value
0,76 W/(m²K)

Rw
38 (-2;-7) dB

Thickness
100 mm
Mass per squaremeter
40 kg/m²

Global warming potential
-35 kg CO ₂ eq./m²
Primary energy (n. renewable)
45 kWh/m²

Link Ubakus
[IW 01 RP Ubakus](#)

Link pre-dimensioning fire
[KLH REI 0](#)

Fire protection
R*EI
0

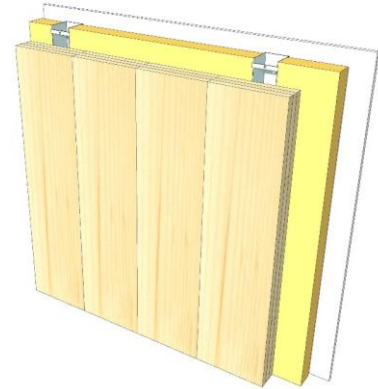
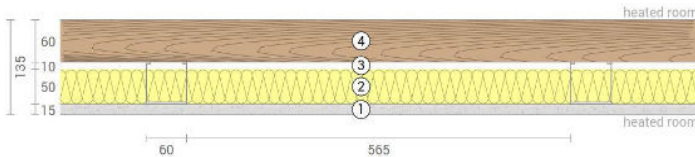
Thermal protection
W/(m²K)
0,76

Sound insulation
dB
38

Ecology
kg CO₂ eq./m²
-35

IW 01 FF

Interior wall /KLH® - CLT 60 TT
Facing formwork



No	mm	Material
1	15	Gt-F board
2	50	Rock wool
3	60	CW-profile mounted elastically or free
4	60	KLH® - CLT

R*EI (fire attack on both sides)
0 minutes

U-Value
0,53 W/(m²K)

Rw
40 (-2;-7) dB

Thickness
135 mm
Mass per squaremeter
44 kg/m²

Global warming potential
-31 kg CO ₂ eq./m²
Primary energy (n. renewable)
57 kWh/m²

Link Ubakus
[IW 01 FF Ubakus](#)

Link pre-dimensioning fire
[KLH REI 0](#)

Fire protection
R*EI
0

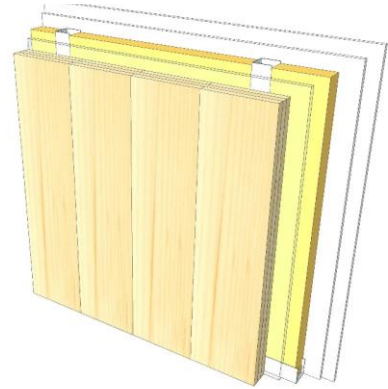
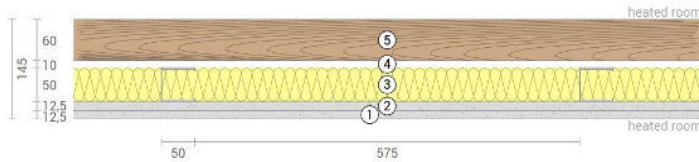
Thermal protection
W/(m²K)
0,53

Sound insulation
dB
40

Ecology
kg CO₂ eq./m²
-31

IW 01 FF2

Interior wall / KLH® - CLT 60 TT
Self-supporting formwork



No	mm	Material
1	12,5	Gt-F board
2	12,5	Gt-F board
3	50	CW-profile self supporting, rock wool
4	10	Air gap
5	60	KLH® - CLT

R*EI (fire attack on both sides)
0 minutes

U-Value
0,50 W/(m²K)

Rw
49 (-2;-7) dB

Thickness
145 mm
Mass per squaremeter
50 kg/m²

Global warming potential
-31 kg CO ₂ eq./m²
Primary energy (n. renewable)
61 kWh/m²

Link Ubakus
[IW 01 FF2 Ubakus](#)

Link pre-dimensioning fire
[KLH REI 0](#)

Fire protection
R*EI
0

Thermal protection
W/(m²K)
0,50

Sound insulation
dB
49

Ecology
kg CO₂ eq./m²
-31