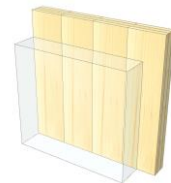


IW 03

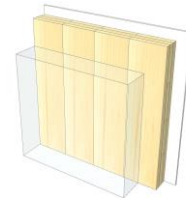
KLH® 5s 160



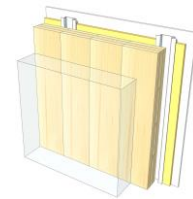
KLH® Visible



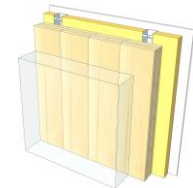
+ G



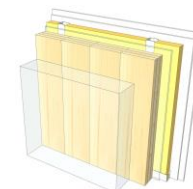
+ RP



+ FF



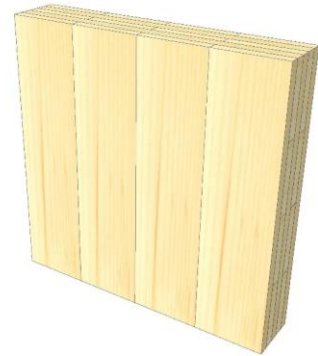
+ FF free / 2*G



	KLH® Visible	+ G	+ RP	+ FF	+ FF free / 2*G
Sound R_w [dB]	39	40	48	51	61
Thermal U [W/m^2K]	0,63	0,61	0,46	0,36	0,35
Fire R^*EI [min]	30	60	60	90	90
Thickness [mm]	160	173	200	235	245
Ecology [$kg\ CO_2\ eq./m^2$]	-108	-106	-102	-98	-98

IW 03 V

Interior wall / KLH® - CLT 160 TT



No	mm	Material
1	160	KLH® - CLT

R*EI	(fire attack on both sides)
30	minutes

U-Value
0,63 W/(m²K)

Rw
39 (-1;-4) dB

Thickness
160 mm
Mass per squaremeter
75 kg/m²

Global warming potential
-108 kg CO ₂ eq./m²
Primary energy (n. renewable)
62 kWh/m²

Link Ubakus
[IW 03 V Ubakus](#)

Link pre-dimensioning fire
[KLH REI 30](#)

Fire protection
 R*EI
30

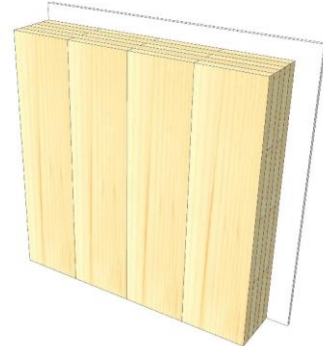
Thermal protection
 W/(m²K)
0,63

Sound insulation
 dB
39

Ecology
 kg CO₂eq./m²
-108

IW 03 G

Interior wall / KLH® - CLT 160 TT
Cladded



No	mm	Material
1	12,5	Gt-F board
2	160	KLH® - CLT

R*EI	(fire attack on both sides)
60	minutes

U-Value
0,61 W/(m²K)

Rw
40 (-1;-4) dB

Thickness
173 mm
Mass per squaremeter
85 kg/m²

Global warming potential
-106 kg CO ₂ eq./m²
Primary energy (n. renewable)
73 kWh/m²

Link Ubakus
[IW 03 G Ubakus](#)

Link pre-dimensioning fire
[KLH REI 60](#)

Fire protection
R*EI
60

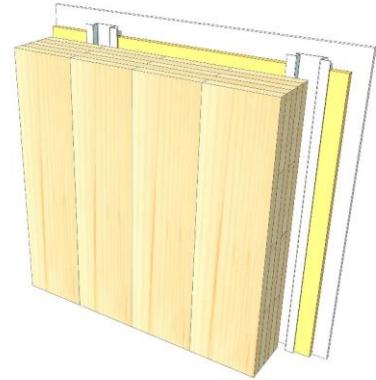
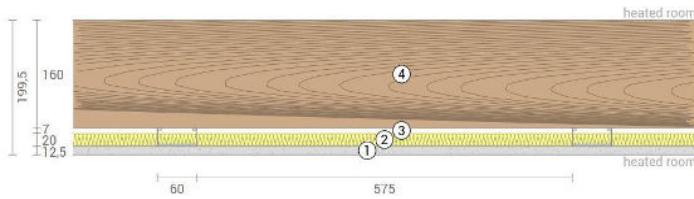
Thermal protection
W/(m²K)
0,61

Sound insulation
dB
40

Ecology
kg CO₂ eq./m²
-106

IW 03 RP

Interior wall / KLH® - CLT 160 TT
Resilient profile



No	mm	Material
1	12,5	Gt-F board
2	20	Mineral wool
3	27	Resilient profile
4	160	KLH® - CLT

R*EI (fire attack on both sides)
60 minutes

U-Value
0,46 W/(m²K)

Rw
48 (-1;-7) dB

Thickness
200 mm
Mass per squaremeter
87 kg/m²

Global warming potential
-102 kg CO ₂ eq./m²
Primary energy (n. renewable)
84 kWh/m²

Link Ubakus
[IW 03 RP Ubakus](#)

Link pre-dimensioning fire
[KLH REI 60](#)

Fire protection
R*EI
60

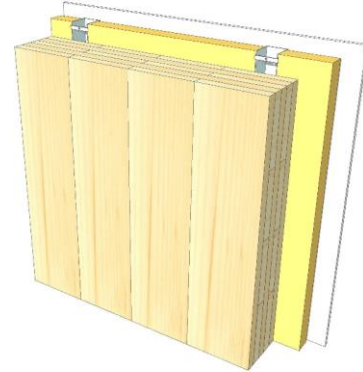
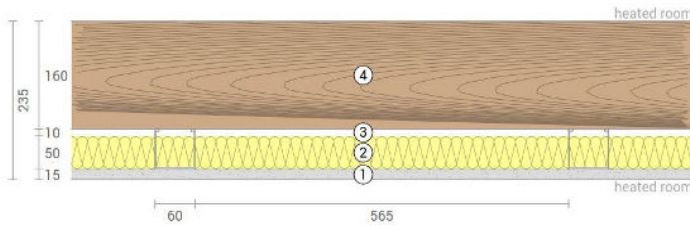
Thermal protection
W/(m²K)
0,46

Sound insulation
dB
48

Ecology
kg CO₂ eq./m²
-102

IW 03 FF

Interior wall / KLH® - CLT 160 TT
Facing formwork



No	mm	Material
1	15	Gt-F board
2	50	Rock wool
3	60	CW-profile mounted elastically or free
4	160	KLH® - CLT

R*EI (fire attack on both sides)
90 minutes

U-Value
0,36 W/(m²K)

Rw
51 (-2;-8) dB

Thickness
235 mm
Mass per squaremeter
91 kg/m²

Global warming potential
-98 kg CO ₂ eq./m²
Primary energy (n. renewable)
96 kWh/m²

Link Ubakus
[IW 03 FF Ubakus](#)

Link pre-dimensioning fire
[KLH REI 90](#)

Fire protection
R*EI
90

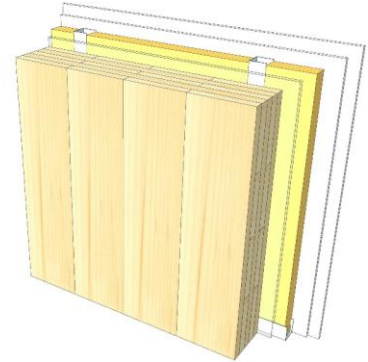
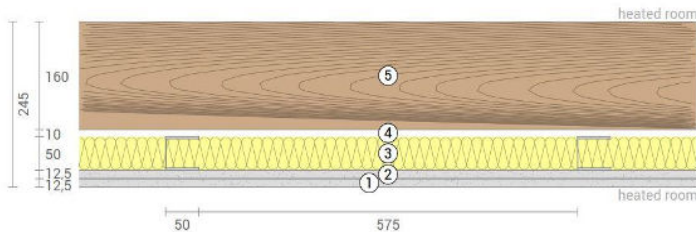
Thermal protection
W/(m²K)
0,36

Sound insulation
dB
51

Ecology
kg CO₂ eq./m²
-98

IW 03 FF2

Interior wall / KLH® - CLT 160 TT
Self-supporting formwork



No	mm	Material
1	12,5	Gt-F board
2	12,5	Gt-F board
3	50	CW-profile self supporting, rock wool
4	10	Air gap
5	160	KLH® - CLT

R*EI (fire attack on both sides)
90 minutes

U-Value
0,35 W/(m²K)

Rw
61 (-3;9) dB

Thickness
245 mm
Mass per squaremeter
97 kg/m²

Global warming potential
-98 kg CO ₂ eq./m²
Primary energy (n. renewable)
100 kWh/m²

Link Ubakus
[IW 03 FF2 Ubakus](#)

Link pre-dimensioning fire
[KLH REI 90](#)

Fire protection
R*EI
90

Thermal protection
W/(m²K)
0,35

Sound insulation
dB
61

Ecology
kg CO₂ eq./m²
-98