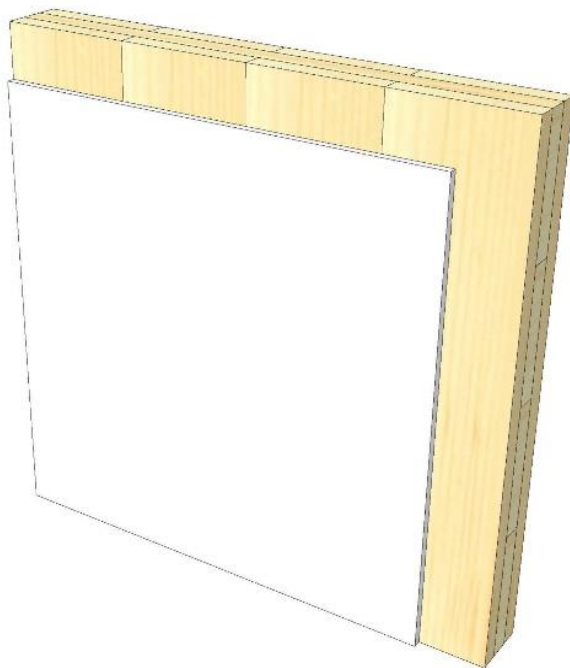
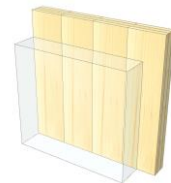


IW 04

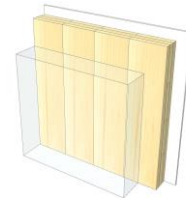
Cladded



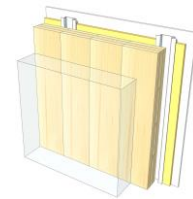
KLH® Visible



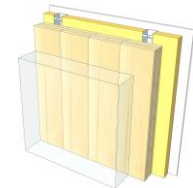
+ G



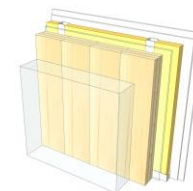
+ RP



+ FF



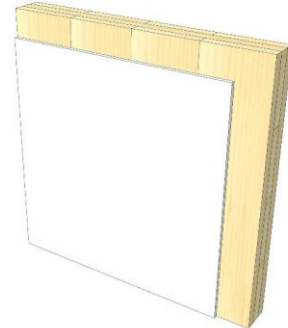
+ FF free / 2*G



	KLH® Visible	+ G	+ RP	+ FF	+ FF free / 2*G
Sound R_w [dB]	34	35	45	48	60
Thermal U [W/m^2K]	0,87	0,84	0,59	0,43	0,42
Fire R^*EI [min]	30	60	60	60	60
Thickness [mm]	113	125	152	188	198
Ecology [kg CO ₂ eq./m ²]	-65	-63	-59	-55	-55

IW 04 V

Interior wall
Cladded



No	mm	Material
1	100	KLH® - CLT
2	12,5	Gt-F board

R*EI (fire attack on both sides)
30 minutes

U-Value
0,87 W/(m²K)

Rw
34 (0;-2) dB

Thickness
113 mm
Mass per squaremeter
57 kg/m²

Global warming potential
-65 kg CO ₂ eq./m²
Primary energy (n. renewable)
49 kWh/m²

Link Ubakus
[IW 04 V Ubakus](#)

Link pre-dimensioning fire
[KLH REI 30](#)

Fire protection
R*EI
30

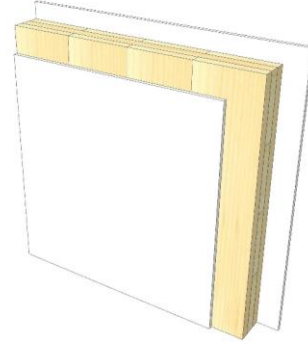
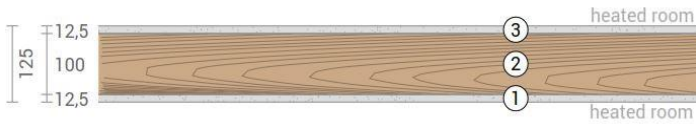
Thermal protection
W/(m²K)
0,87

Sound insulation
dB
34

Ecology
kg CO₂eq./m²
-65

IW 04 G

Interior wall / cladded
both-sided



No	mm	Material
1	12,5	Gt-F board
2	100	KLH® - CLT
3	12,5	Gt-F board

R*EI (fire attack on both sides)
60 minutes

U-Value
0,84 W/(m²K)

Rw
35 (0;-2) dB

Thickness
125 mm
Mass per squaremeter
67 kg/m²

Global warming potential
-63 kg CO ₂ eq./m²
Primary energy (n. renewable)
60 kWh/m²

Link Ubakus
[IW 04 G Ubakus](#)

Link pre-dimensioning fire
[KLH REI 60](#)

Fire protection
R*EI
60

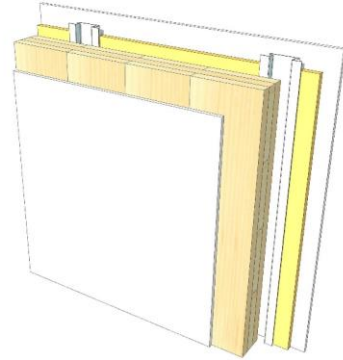
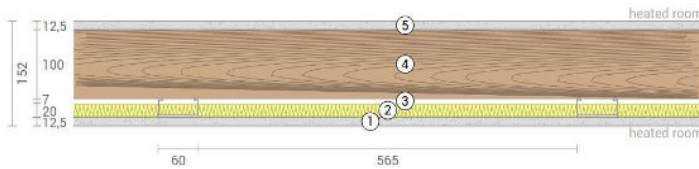
Thermal protection
W/(m²K)
0,84

Sound insulation
dB
35

Ecology
kg CO₂eq./m²
-63

IW 04 RP

Interior wall / cladded
Resilient profile



No	mm	Material
1	12,5	Gt-F board
2	20	Mineral wool
3	27	Resilient profile
4	100	KLH® - CLT
5	12,5	Gt-F board

R*EI (fire attack on both sides)
60 minutes

U-Value
0,59 W/(m²K)

Rw
45 (0;-6) dB

Thickness
152 mm
Mass per squaremeter
68 kg/m²

Global warming potential
-59 kg CO ₂ eq./m²
Primary energy (n. renewable)
71 kWh/m²

Link Ubakus
[IW 04 RP Ubakus](#)

Link pre-dimensioning fire
[KLH REI 60](#)

Fire protection
R*EI
60

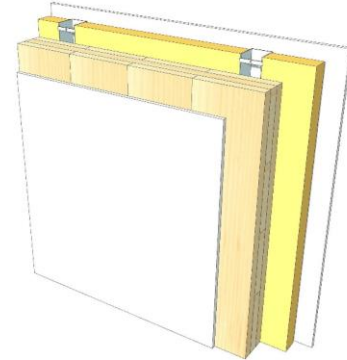
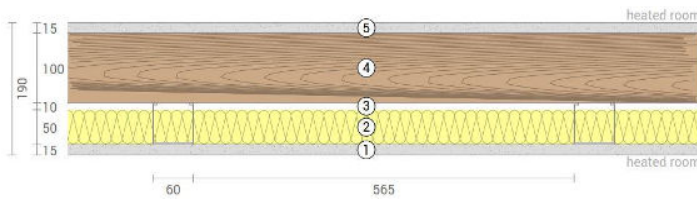
Thermal protection
W/(m²K)
0,59

Sound insulation
dB
45

Ecology
kg CO₂ eq./m²
-59

IW 04 FF

Interior wall / cladded
Facing formwork



No	mm	Material
1	15	Gt-F board
2	50	Rock wool
3	60	CW-profile mounted elastically or free
4	100	KLH® - CLT
5	12,5	Gt-F board

R*EI (fire attack on both sides)
60 minutes

U-Value
0,43 W/(m²K)

Rw
48 (-1;-7) dB

Thickness
188 mm
Mass per squaremeter
73 kg/m²

Global warming potential
-55 kg CO ₂ eq./m²
Primary energy (n. renewable)
83 kWh/m²

Link Ubakus
[IW 04 FF Ubakus](#)

Link pre-dimensioning fire
[KLH REI 60](#)


Fire protection
R*EI
60




Thermal protection
W/(m²K)
0,43



Sound insulation
dB
48

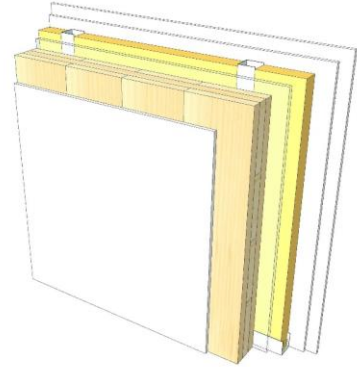
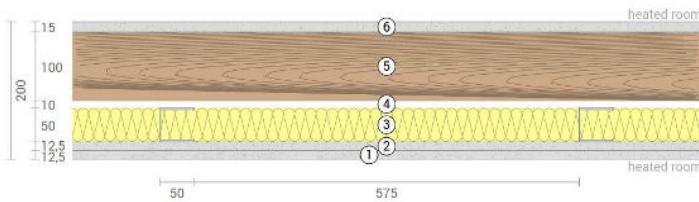


Ecology
kg CO₂eq./m²
-55



IW 04 FF2

Interior wall / cladded
Self-supporting formwork



No	mm	Material
1	12,5	Gt-F board
2	12,5	Gt-F board
3	50	CW-profile self supporting, rock wool
4	10	Air gap
5	100	KLH® - CLT
6	12,5	Gt-F board

R*EI (fire attack on both sides)
60 minutes

U-Value
0,42 W/(m²K)

Rw
60 (-2;-9) dB

Thickness
198 mm
Mass per squaremeter
79 kg/m²

Global warming potential
-55 kg CO ₂ eq./m²
Primary energy (n. renewable)
87 kWh/m²

Link Ubakus
[IW 04 FF2 Ubakus](#)

Link pre-dimensioning fire
[KLH REI 60](#)

Fire protection
R*EI
60

Thermal protection
W/(m²K)
0,42

Sound insulation
dB
60

Ecology
kg CO₂ eq./m²
-55