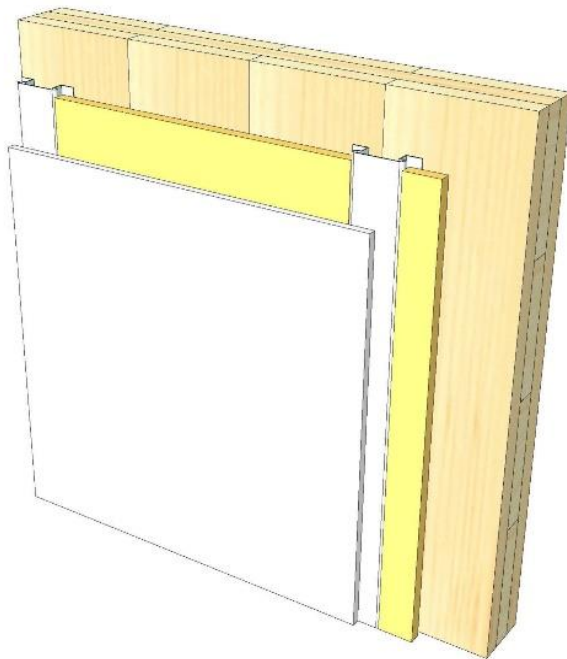
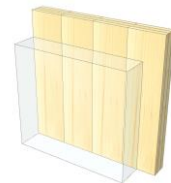


# IW 05

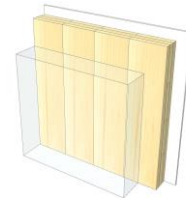
## Resilient profile



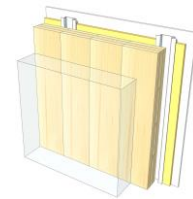
KLH® Visible



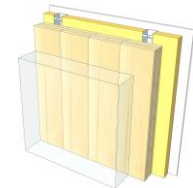
+ G



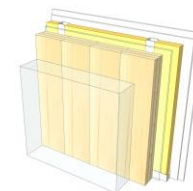
+ RP



+ FF



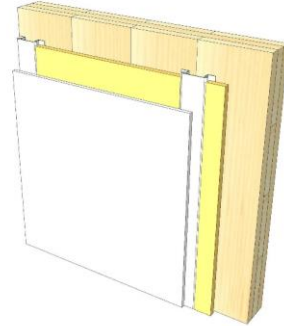
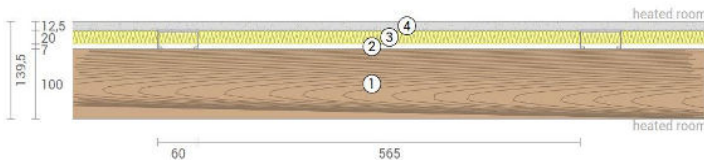
+ FF free / 2\*G



	KLH® Visible	+ G	+ RP	+ FF	+ FF free / 2*G
<b>Sound</b> $R_w$ [dB]	44	45	48	50	63
<b>Thermal</b> $U$ [ $W/m^2K$ ]	0,60	0,59	0,45	0,36	0,35
<b>Fire</b> $R^*E_I$ [min]	30	60	60	60	60
<b>Thickness</b> [mm]	140	152	179	215	225
<b>Ecology</b> [ $kg\ CO_2\ eq./m^2$ ]	-62	-59	-56	-52	-52

# IW 05 V

## Interior wall / resilient profile



No	mm	Material
1	100	KLH® - CLT
2	27	Resilient profile
3	20	Mineral wool
4	12,5	Gt-F board

R*EI (fire attack on both sides)
<b>30</b> minutes

U-Value
<b>0,60</b> W/(m²K)

Rw
<b>44</b> (-3;9) dB

Thickness
<b>140</b> mm
Mass per squaremeter
<b>58</b> kg/m²

Global warming potential
<b>-62</b> kg CO <sub>2</sub> eq./m²
Primary energy (n. renewable)
<b>61</b> kWh/m²

Link Ubakus  
[IW 05 V Ubakus](#)

Link pre-dimensioning fire  
[KLH REI 30](#)

Fire protection  
 R\*EI  
**30**

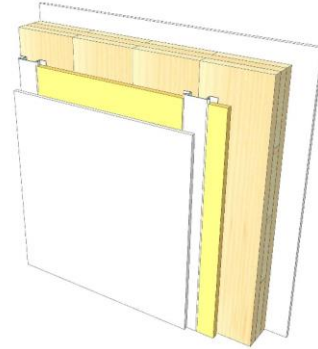
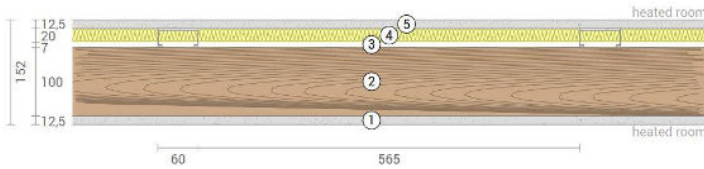
Thermal protection  
 W/(m²K)  
**0,60**

Sound insulation  
 dB  
**44**

Ecology  
 kg CO<sub>2</sub>eq./m²  
**-62**

# IW 05 G

Interior wall / resilient profile  
Cladded



No	mm	Material
1	12,5	Gt-F board
2	100	KLH® - CLT
3	27	Resilient profile
4	20	Mineral wool
5	12,5	Gt-F board

R*EI (fire attack on both sides)
<b>60</b> minutes

U-Value
<b>0,59</b> W/(m²K)

Rw
<b>45</b> (-3;-9) dB

Thickness
<b>152</b> mm
Mass per squaremeter
<b>68</b> kg/m²

Global warming potential
<b>-59</b> kg CO <sub>2</sub> eq./m²
Primary energy (n. renewable)
<b>71</b> kWh/m²

Link Ubakus  
[IW 05 G Ubakus](#)

Link pre-dimensioning fire  
[KLH REI 60](#)

Fire protection  
R\*EI  
**60**

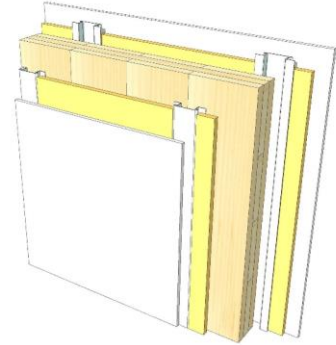
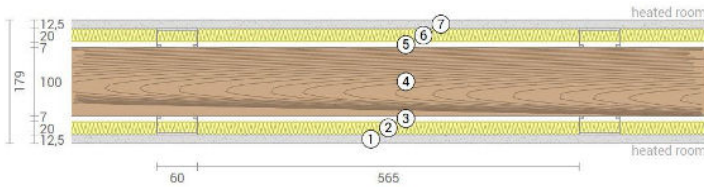
Thermal protection  
W/(m²K)  
**0,59**

Sound insulation  
dB  
**45**

Ecology  
kg CO<sub>2</sub>eq./m²  
**-59**

# IW 05 RP

Interior wall / resilient profile  
both-sided



No	mm	Material
1	12,5	Gt-F board
2	20	Mineral wool
3	27	Resilient profile
4	100	KLH® - CLT
5	27	Resilient profile
6	20	Mineral wool
7	12,5	Gt-F board

R*EI (fire attack on both sides)
<b>60</b> minutes

U-Value
<b>0,45</b> W/(m²K)

Rw
<b>48</b> (-6,-13) dB

Thickness
<b>179</b> mm
Mass per squaremeter
<b>70</b> kg/m²

Global warming potential
<b>-56</b> kg CO <sub>2</sub> eq./m²
Primary energy (n. renewable)
<b>83</b> kWh/m²

Link Ubakus  
[IW 05 RP Ubakus](#)

Link pre-dimensioning fire  
[KLH REI 60](#)

Fire protection  
R\*EI  
**60**

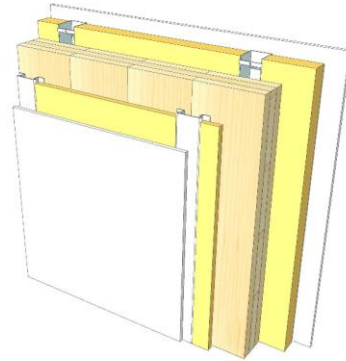
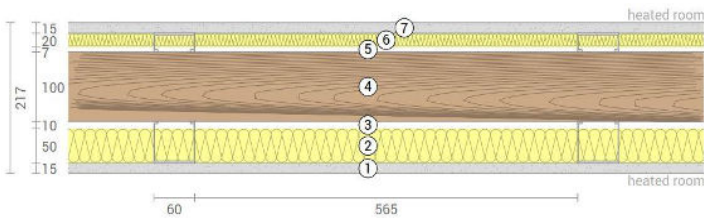
Thermal protection  
W/(m²K)  
**0,45**

Sound insulation  
dB  
**48**

Ecology  
kg CO<sub>2</sub> eq./m²  
**-56**

# IW 05 FF

Interior wall / resilient profile  
Facing formwork



No	mm	Material
1	15	Gt-F board
2	50	Rock wool
3	60	CW-profile mounted elastically or free
4	100	KLH® - CLT
5	27	Resilient profile
6	20	Mineral wool
7	12,5	Gt-F board

R*EI (fire attack on both sides)
<b>60</b> minutes

U-Value
<b>0,36</b> W/(m²K)

Rw
<b>50</b> (-6;-13) dB

Thickness
<b>215</b> mm
Mass per squaremeter
<b>74</b> kg/m²

Global warming potential
<b>-52</b> kg CO <sub>2</sub> eq./m²
Primary energy (n. renewable)
<b>95</b> kWh/m²

Link Ubakus  
[IW 05 FF Ubakus](#)

Link pre-dimensioning fire  
[KLH REI 60](#)

Fire protection  
R\*EI  
**60**

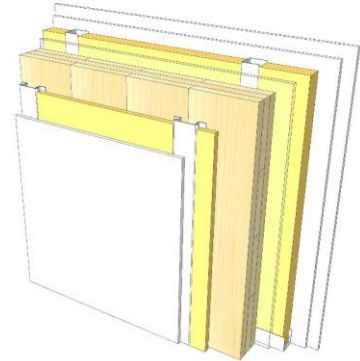
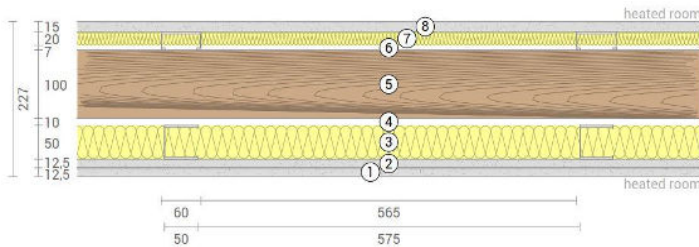
Thermal protection  
W/(m²K)  
**0,36**

Sound insulation  
dB  
**50**

Ecology  
kg CO<sub>2</sub> eq./m²  
**-52**

# IW 05 FF2

Interior wall / resilient profile  
Self-supporting formwork



No	mm	Material
1	12,5	Gt-F board
2	12,5	Gt-F board
3	50	CW-profile self supporting, rock wool
4	10	Air gap
5	100	KLH® - CLT
6	27	Resilient profile
7	20	Mineral wool
8	12,5	Gt-F board

R\*EI (fire attack on both sides)  
**60** minutes

U-Value  
**0,35** W/(m²K)

Rw  
**63** (-9;-16) dB

Thickness  
**225** mm

Mass per squaremeter  
**81** kg/m²

Global warming potential  
**-52** kg CO<sub>2</sub> eq./m²

Primary energy (n. renewable)  
**99** kWh/m²

Link Ubakus  
[IW 05 FF2 Ubakus](#)

Link pre-dimensioning fire  
[KLH REI 60](#)

Fire protection  
R\*EI  
**60**

Thermal protection  
W/(m²K)  
**0,35**

Sound insulation  
dB  
**63**

Ecology  
kg CO<sub>2</sub> eq./m²  
**-52**